

Practical Course in Particle Physics

at the Paul Scherrer Institut (PSI, Switzerland), Summer 2014

Perform a real particle physics experiment at a PSI beam-line.

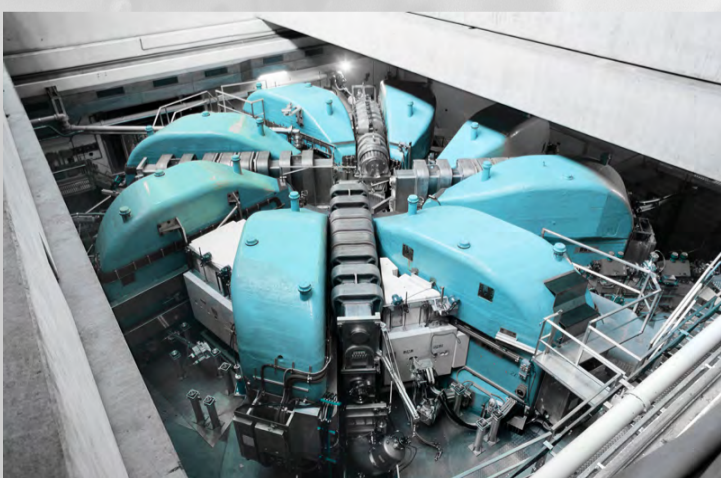
Learn experimental particle physics hands-on.

Join a group of 10-12 students from ETH Zürich and Heidelberg University for one week of preparations in Heidelberg and two weeks of beam time at PSI.

Design and build your experiment from available detector components, take data during a 24/7 beam time. Analyse the data and write up the results.

Example measurements:

- Branching ratio $B(\pi \rightarrow e\nu)/B(\pi \rightarrow \mu\nu)$
- Panofsky ratio $B(\pi^- p \rightarrow n\pi^0)/B(\pi^- p \rightarrow n\gamma)$
- Lifetimes and decay parameters of muons and pions



Next course: 25.8.-12.9.2014

Please contact:

Niklaus Berger (nberger@physi.uni-heidelberg.de)

Christoph Grab (grab@phys.ethz.ch)

Limited number of places, please register early!

The course (MVPSI) is part of the master programme of the faculty for physics and astronomy in Heidelberg