

# Prototype IF14-1 for an Optical 12 input Receiver Card for the LHCb TELL1 Board

September 6, 2004

## Abstract

The Optical Receiver Card for the LHCb TELL1 Board receives optical serial data coming from the cavern by optical ribbon fibers and transforms it to parallel electrical data. It is equipped with a 12 fiber optical receiver and 12 deserializer chips. It will be used by the Silicon Tracker, Trigger Tracker, Outer Tracker, Veto, Muon and Calorimeter. Two optical receiver cards fit on one LHCb TELL1 allowing a total of 24 optical inputs. The LHCb Inner and Outer tracker will use the Optical Receiver Card together with the GOL chip on the detector side. The Vertex Locator will use Analog Receiver Cards, two of which use the same space and connectors as one Optical Receiver Card.

## LHCb Public Note

Issue	Version 2.0
Revision	1
Reference	LHCb-2004-072
Created	July 23, 2003
Last Modified	September 6, 2004

**Prepared by** G.Haefeli, U.Uwer, A.Vollhardt, [D.Wiedner](#)

# Contents

<b>1</b>	<b>Introduction</b>	<b>5</b>
<b>2</b>	<b>Optical Receiver</b>	<b>5</b>
2.1	Optical . . . . .	5
2.2	Electrical . . . . .	7
2.3	Mechanics . . . . .	9
<b>3</b>	<b>Deserializer</b>	<b>9</b>
3.1	Electrical . . . . .	10
<b>4</b>	<b>Input/Output</b>	<b>16</b>
<b>5</b>	<b>LEDs</b>	<b>24</b>
<b>6</b>	<b>Clock distribution</b>	<b>24</b>
<b>7</b>	<b>Power</b>	<b>25</b>
<b>8</b>	<b>PCB technology</b>	<b>26</b>
<b>A</b>	<b>Mechanical dimensions</b>	<b>28</b>
<b>B</b>	<b>Schematics</b>	<b>32</b>
<b>C</b>	<b>Layout</b>	<b>36</b>
<b>D</b>	<b>Component placement specification</b>	<b>49</b>
<b>E</b>	<b>Bill of materials</b>	<b>51</b>
<b>F</b>	<b>Prices</b>	<b>53</b>
<b>G</b>	<b>Adapter Board</b>	<b>54</b>

## List of Tables

1	Optical characteristic of the SNAP12 receiver . . . . .	5
2	SNAP12 electrical characteristic . . . . .	8
3	Receiver pin map . . . . .	9
4	SNAP12 compatibility . . . . .	11
5	SNAP12 compatibility . . . . .	12
6	Receive Status Signal . . . . .	13
7	Fast TLK2501 inputs . . . . .	13
8	80 MHz TTL TLK2501 outputs . . . . .	13
9	Debugging inputs TLK2501 . . . . .	14
10	TTL input characteristics TLK2501 . . . . .	15
11	TLK2501 power characteristic . . . . .	15
12	Signal distribution RxCard connector-S1 1/2 . . . . .	18
13	Signal distribution RxCard connector-S1 2/2 . . . . .	19
14	Signal distribution RxCard connector-S2 1/2 . . . . .	20
15	Signal distribution RxCard connector-S2 2/2 . . . . .	21
16	Monitor and Control connector . . . . .	22
17	Power Plates 200 Pin Samtec connector . . . . .	22
18	Power Connector . . . . .	23
19	LEDs . . . . .	24
20	Power Consumption . . . . .	25
21	PCB layers . . . . .	26
22	Trace dimensions 1.6 GHz traces . . . . .	26
23	Bill Of Materials 1/2 . . . . .	51
24	Bill Of Materials 2/2 . . . . .	52
25	Prices . . . . .	53
26	Bill Of Materials AS24-0 . . . . .	54
27	Connectivity adapter board 1/4 . . . . .	55
28	Connectivity adapter board 2/4 . . . . .	56
29	Connectivity adapter board 3/4 . . . . .	57
30	Connectivity adapter board 4/4 . . . . .	58

## List of Figures

1	Overview of the O-RxCard . . . . .	6
2	Data flow O-RxCard . . . . .	7
3	Trace dimensions . . . . .	27
4	Mechanical dimension O-RxCard - TELL1 interface . . . . .	28
5	Mechanical dimension of the O-RxCard . . . . .	29
6	IF14-1 layer 1 . . . . .	30
7	IF14-1 layer 8 . . . . .	31
8	Schematics 1/4 . . . . .	32
9	Schematics 2/4 . . . . .	33
10	Schematics 3/4 . . . . .	34
11	Schematics 4/4 . . . . .	35
12	layer 1/8 . . . . .	36
13	layer 2/8 . . . . .	37
14	layer 3/8 . . . . .	38
15	layer 4/8 . . . . .	39
16	layer 5/8 . . . . .	40
17	layer 6/8 . . . . .	41
18	layer 6/8 . . . . .	42
19	layer 7/8 . . . . .	43
20	Soldermask layer 1 . . . . .	44
21	Soldermask layer 8 . . . . .	45
22	SMD paste . . . . .	46
23	Print layer1 . . . . .	47
24	Drill . . . . .	48
25	Component placement specification top . . . . .	49
26	Component placement specification bottom . . . . .	50
27	Schematics Adapter Board . . . . .	59
28	Adapter Board component placement specification top . . . . .	60
29	Adapter Board component placement specification bottom . . . . .	61
30	Adapter Board layout top . . . . .	62
31	Adapter Board layout bottom . . . . .	63
32	Adapter Board Text . . . . .	64

# 1 Introduction

Optical data arriving at 1.6 Gbit/s on a 12 fiber optical ribbon is de-serialized and 8/10 bit decoded to 12 ·16 bit parallel at 80 MHz. The optical receiver is a 12 input device with an socket following the SNAP12 [6] industry standard. Deserializer is a TLK2501 [4] receiving 8/10 bit encoded serial data at 1.6 Gbit/s. It outputs 16 bit parallel data at 80 MHz plus data valid (RxDv), receive error (RxEr) and receive clock (RxClk) signals, through two high speed connectors Samtec QTS-100-03-L-D-A to the LHCb TELL1 Board [?]. The physical dimensions of the O-RxCard are 178 mm x 165 mm, the stack height of the connectors between O-RxCard and TELL1 Board is 11 mm.

The O-RxCard uses analog 2.5 V, digital 2.5 V and digital 3.3 V, supplied by the LHCb TELL1 Board. Figure 1 shows the major components of the O-RxCard, the data flow is shown in figure 2.

## 2 Optical Receiver

The optical receiver has 12 fiber optical ribbon inputs for data rates of up to 2.5 Gbit/s per channel, 1.6 Gbit/s will be the single fiber data rate.

### 2.1 Optical

The receiver is produced for 62.5/125  $\mu\text{m}$  fiber size and a center wavelength of 850 nm see table 1. The optical connector is MTP (MTO) compatible, a common type of optical ribbon cable for LHCb will be defined. Breakout cables from ribbon fiber to single LC, SMA or SC connectors will be used by sub detectors with single fiber inputs.

Table 1: Optical characteristic of the SNAP12 receiver

Parameter	Min.	Typ	Max
Average optical input power (sensitivity/saturation)	-16 dBm		-2 dBm
Wavelength	830 nm		860 nm
fiber	50/125 $\mu\text{m}$		62.5/125 $\mu\text{m}$

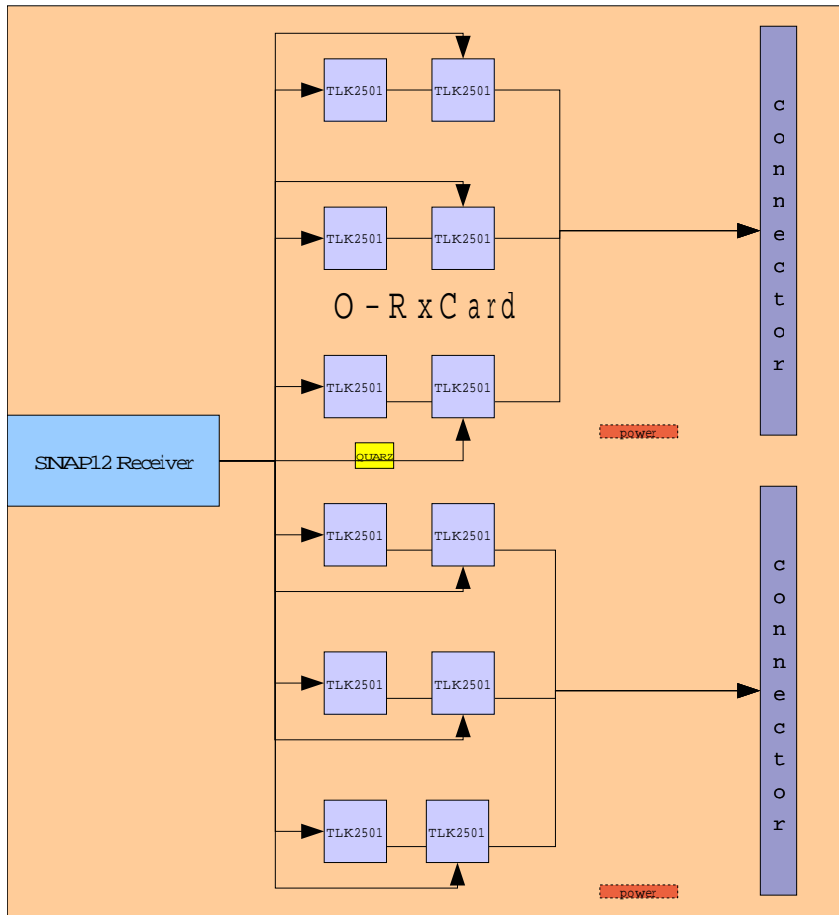


Figure 1: O-RxCard-overview, seen from top. Component side is bottom.

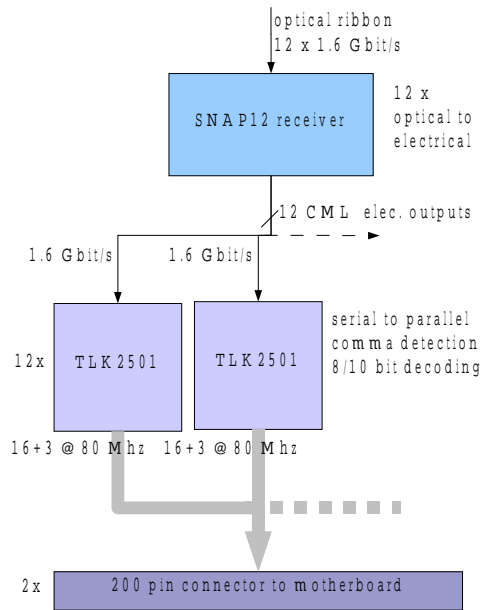


Figure 2: *Data flow O-RxCard. 12 fiber optical ribbon data is converted to high speed CML electrical signals, deserialized and 8/10 bit decoded.*

## 2.2 Electrical

The fast 1.6 Gbit/s outputs are AC-coupled high speed CML standard, summarized in table 2

The high speed connection between optical receiver and deserializer are differential 100 Ohm traces (see section 8), with AC coupling (10 nF) and 50 Ohm termination to a termination voltage of 2 V at the deserializer inputs (see appendix B). Test pads with low capacity allow signal integrity checks for the twelve pairs of high speed traces. The receiver is mounted on a 100 pin BGA socked with connectivity shown in table 3.

- NC no connection
- DNC do not connect
- GND ground
- DOUT differtial data output
- TDO AC-JTAG Test Data Out

Table 2: Electrical Characteristics of the SNAP12

Parameter	Min.	Typ	Max
Supply voltage	3.135 V	3.3 V	3.465 V
Supply current		350 mA	450 mA
Power dissipation		1.1 W	1.6 W
supply noise			200 mV
Data output voltage (Differential pk-pk)	450 mV		800 mV
Stressed eye opening Total jitter (pk-pk)	120 ps		120 ps
Deterministic jitter			45 ps

- TRST\_L AC-JTAG Test Asynchronous Reset to JTAG Controller within Module. Active low
- TCK AC-JTAG Test clock
- TDI AC-JTAG Test Data In
- TMS AC-JTAG Test Mode Select
- SD will de-assert (low) if one or more than one optical input has input power below -19 dBm.
- ENSD Signal detect enable; High = normal operation, Low = inadequate power on one or more channels.
- RXEN Output enable; high normal operation, Low = receiver disabled; internal pull-up.
- SQEN is the squelch enable input. If squelch enable (SQEN) is high (internal pull up), all outputs go to logic zero in case of signal detect = low. SQEN is pulled down by an external pull down resistor; internal pull-up.

The SNAP12 specifications includes the following optional signals

- SD1 Signal detect channel 1; High = normal operation, low = inadequate power on channel 1
- -SD12 Signal detect channel 12; High = normal operation, low = inadequate power on channel 12



Table 3: Pin Map for the Emcore MRX9512

	K	J	H	G	F	E	D	C	B	A
1	VCC	NC	NC	GND	GND	GND	GND	GND	GND	NC
2	VCC	NC	NC	GND	GND	DO6n	GND	GND	DO9n	GND
3	NC	VCC	VCC	GND	DO5n	DO6p	GND	DO8n	DO9p	GND
4	NC	VCC	VCC	DO4n	DO5p	GND	DO7n	DO8p	GND	NC
5	NC	VCC	VCC	DO4p	GND	DO3n	DO7p	GND	DO10p	GND
6	NC	VCC	VCC	GND	DO2n	DO3p	GND	DO11p	DO10n	GND
7	NC	NC	SD	DO1n	DO2p	GND	DO12p	DO11n	GND	NC
8	VCC	NC	NC	DO1p	GND	GND	DO12n	GND	GND	NC
9	VCC	RXEN	ENSD	GND	GND	GND	GND	GND	GND	NC
10	SQEN	TMS	TDI	TCK	TRST_L	TDO	DNC	DNC	DNC	DNC

The O-RxCARD was designed for compatibility with the SNAP12 standard. In order to mount components of different vendors, the differences in the BGA usage have to be taken into account. Table 4, 5 gives an overview of the pin out of receiver modules from major vendors, the connectivity for the first O-RxCARD prototype IF14-0 and the preproduction type IF14-1.

The 3.3 V power for the optical receiver is filtered with a low DC resistance ferrite bead plus six 4.7  $\mu$ F and six 10 nF ceramic capacitors ensuring high immunity to switching noise from the TELL1 Board.

## 2.3 Mechanics

Utilizing a SNAP12 [6] standard Meg Array connector it can easily be mounted or replaced by receivers from other producers. The Meg Array connector has a 10x10 pin 1.27 mm pitch BGA footprint. Overall dimensions are 42.67 mm x 18.0 mm x 15.25 mm (LxWxH) maximum, with three screw holes (2.7 mm) and two positioning pin holes (1.7 mm) forseen. Mounting on the bottom side of the O-RxCARD makes cut outs (45 mm x 25 mm) in the motherboard (TELL1) necessary, since the spacing is only 11 mm between both boards. More detailed information can be found in [5] and appendix A.

## 3 Deserializer

The TLK2501 [4] is a 1.5 to 2.5 Gbit/s serializer/deserializer. As one TLK2501 is needed per optical input, twelve deserializers are mounted on the O-RxCARD

in total. The TLK2501 performs serial to parallel data conversion and clock extraction. In addition 8/10 bit decoding following Gbit-Ethernet [7] is done. At 1.6 Gbit/s<sup>1</sup> input data rate 16 bits, two control bits and the receive clock are output at 80 MHz. The receive clock (RxClk) is the recovered serial data clock divided by 20 (=80 MHz), data and control bits are valid on the rising edge of the RxClk. The control bits receive error (RxEr) and (RxDv) indicate idle mode, carrier extend, normal data or receive error propagation see table 6. Some sub detectors will use the RxDv signal for data synchronization. This implies that the front end chip (ie. OTIS, Beetle) has to pull high the tx\_en input of the serializer (GOL) for the full time valid data is input to the serializer.

### 3.1 Electrical

The TLK2501 has serial differential receive inputs with a 200 mV input threshold see table 7<sup>2</sup>

The input from the optical receiver to the TLK2501 is AC coupled 100 Ohm differential see 2.2.

The 16-bit parallel data, control words and RxClk output signals are 2.5 V TTL compatible, shown in table 8.

The 80 MHz parallel data, RxEr, RxDv, RxClk are series terminated with 50 Ohm at the TLK2501 and have controlled impedance 50 Ohm traces to the Samtec QTS-100-03-L-D-A connector. Note that these traces are not matched in length, 200 ps skew between RxClk and RxData can be reached within one data group, the estimate for the maximum skew within the hole board is 500 ps corresponding to 10 cm maximum difference in trace length.

For debugging purposes the TLK2501 has four inputs described in table 9

The TTL inputs GtxClk, Enable, LckRef, LoopEn, PrbsEn are TTL compatible, table 10.

The TLK2501 needs 2.5 V power, coming over Cu plates on the Samtec high speed connector. For best operation a separate analog 2.5 V input is foreseen. Each deserializer has two C/L/C low-pass filters for analog 2.5 V and extra blocking capacitors for digital 2.5 V. The relevant power supply parameters for the TLK2501 are summarized in table 11

---

<sup>1</sup>All clocks are a multiple of the LHC frequency 40.0787 MHz

<sup>2</sup> UI is the time interval of one serialized bit, here 0.625 ns

Table 4: SNAP12 compatibility for receivers from different vendors. A “!” indicates incompatibility, DNC is do not connect, NC is not connected, NIC is no internal connection, jumpers are named after the ball i.e. JA10. For the boards described here (IF14-1, the Emcore MRX9512 is baseline)

Pin	SNAP12	Agilent	Emcore	Paracer	Picolight	Zarlink	IF14-0	IF14-1
A1	NIC	DNC!	NIC	NIC	NIC	NIC	NC	NC
A2	GND	GND	GND	GND	GND	GND	GND	GND
A3	GND	GND	GND	GND	GND	GND	GND	GND
A4	NIC	DNC!	NIC	GND!	NIC	NIC	Jump GND	JA4 GND
A5	GND	GND	GND	GND	GND	GND	GND	GND
A6	GND	GND	GND	GND	GND	GND	GND	GND
A7	NIC	DNC!	NIC	NIC	NIC	NIC	NC	NC
A8	NIC	DNC!	NIC	NIC	NIC	NIC	NC	NC
A9	NIC	DNC!	NIC	NIC	NIC	NIC	NC	NC
A10	VENDOR	DNC!	DNC!	NIC	NIC	DNC!	NC	JA10 GND
B1	GND	GND	GND	GND	GND	GND	GND	GND
B2	DOUT9n	DOUT9n	DOUT9n	DOUT9n	DOUT9n	DOUT9n	DOUT9n	OUT9n
B3	DOUT9p	DOUT9p	DOUT9p	DOUT9p	DOUT9p	DOUT9p	DOUT9p	DOUT9p
B4	GND	GND	GND	GND	GND	GND	GND	GND
B5	DOUT10p	DOUT10p	DOUT10p	DOUT10p	DOUT10p	DOUT10p	DOUT10p	DOUT10p
B6	DOUT10n	DOUT10n	DOUT10n	DOUT10n	DOUT10n	DOUT10n	DOUT10n	DOUT10n
B7	GND	GND	GND	GND	GND	GND	GND	GND
B8	GND	GND	GND	GND	GND	GND	GND	GND
B9	GND	GND	GND	GND	GND	GND	GND	GND
B10	VENDOR	DNC!	DNC!	DNC!	NIC	DNC!	NC	JB10 GND
C1	GND	GND	GND	GND	GND	GND	GND	GND
C2	GND	GND	GND	GND	GND	GND	GND	GND
C3	DOUT8n	DOUT8n	DOUT8n	DOUT8n	DOUT8n	DOUT8n	DOUT8n	DOUT8n
C4	DOUT8p	DOUT8p	DOUT8p	DOUT8p	DOUT8p	DOUT8p	DOUT8p	DOUT8p
C5	GND	GND	GND	GND	GND	GND	GND	GND
C6	DOUT11p	DOUT11p	DOUT11p	DOUT11p	DOUT11p	DOUT11p	DOUT11p	DOUT11p
C7	DOUT11n	DOUT11n	DOUT11n	DOUT11n	DOUT11n	DOUT11n	DOUT11n	DOUT11n
C8	GND	GND	GND	GND	GND	GND	GND	GND
C9	GND	GND	GND	GND	GND	GND	GND	GND
C10	VENDOR	DNC!	DNC!	DNC!	NIC	DNC!	NC	JC10 GND
D1	GND	GND	GND	GND	GND	GND	GND	GND
D2	GND	GND	GND	GND	GND	GND	GND	GND
D3	GND	GND	GND	GND	GND	GND	GND	GND
D4	DOUT7n	DOUT7n	DOUT7n	DOUT7n	DOUT7n	DOUT7n	DOUT7n	DOUT7n
D5	DOUT7p	DOUT7p	DOUT7p	DOUT7p	DOUT7p	DOUT7p	DOUT7n	DOUT7n
D6	GND	GND	GND	GND	GND	GND	GND	GND
D7	DOUT12p	DOUT12p	DOUT12p	DOUT12p	DOUT12p	DOUT12p	DOUT12p	DOUT12p
D8	DOUT12n	DOUT12n	DOUT12n	DOUT12n	DOUT12n	DOUT12n	DOUT12n	DOUT12n
D9	GND	GND	GND	GND	GND	GND	GND	GND
D10	VENDOR	DNC!	DNC!	DNC!	NIC	DNC!	NC	JD10 GND
E1	GND	GND	GND	GND	GND	GND	GND	GND
E2	DOUT6n	DOUT6n	DOUT6n	DOUT6n	DOUT6n	DOUT6n	DOUT6n	DOUT6n
E3	DOUT6p	DOUT6p	DOUT6p	DOUT6p	DOUT6p	DOUT6p	DOUT6p	DOUT6p
E4	GND	GND	GND	GND	GND	GND	GND	GND
E5	DOUT3n	DOUT3n	DOUT3n	DOUT3n	DOUT3n	DOUT3n	DOUT3n	DOUT3n
E6	DOUT3p	DOUT3p	DOUT3p	DOUT3p	DOUT3p	DOUT3p	DOUT3p	DOUT3p
E7	GND	GND	GND	GND	GND	GND	GND	GND
E8	GND	GND	GND	GND	GND	GND	GND	GND
E9	GND	GND	GND	GND	GND	GND	GND	GND
E10	VENDOR	DNC!	TDO	NIC	NIC	DNC!	NC	JE10 TDO/GND

Table 5: SNAP12 compatibility for receivers from different vendors

Pin	SNAP12	Agilent	Emcore	Paracer	Picolight	Zarlink	IF14-0	IF14-1
F1	GND	GND	GND	GND	GND	GND	GND	GND
F2	GND	GND	GND	GND	GND	GND	GND	GND
F3	DOUT5n	DOUT5n	DOUT5n	DOUT5n	DOUT5n	DOUT5n	DOUT5n	DOUT5n
F4	DOUT5p	DOUT5p	DOUT5p	DOUT5p	DOUT5p	DOUT5p	DOUT5p	DOUT5p
F5	GND	GND	GND	GND	GND	GND	GND	GND
F6	DOUT2n	DOUT2n	DOUT2n	DOUT2n	DOUT2n	DOUT2n	DOUT2n	DOUT2n
F7	DOUT2p	DOUT2p	DOUT2p	DOUT2p	DOUT2p	DOUT2p	DOUT2p	DOUT2p
F8	GND	GND	GND	GND	GND	GND	GND	GND
F9	GND	GND	GND	GND	GND	GND	GND	GND
F10	VENDOR	DNC!	TRST_L	NIC	NIC	DNC!	NC	JF10 TRST_L/GND
G1	GND	GND	GND	GND	GND	GND	GND	GND
G2	GND	GND	GND	GND	GND	GND	GND	GND
G3	GND	GND	GND	GND	GND	GND	GND	GND
G4	DOUT4n	DOUT4n	DOUT4n	DOUT4n	DOUT4n	DOUT4n	DOUT4n	DOUT4n
G5	DOUT4p	DOUT4p	DOUT4p	DOUT4p	DOUT4p	DOUT4p	DOUT4p	DOUT4p
G6	GND	GND	GND	GND	GND	GND	GND	GND
G7	DOUT1n	DOUT1n	DOUT1n	DOUT1n	DOUT1n	DOUT1n	DOUT1n	DOUT1n
G8	DOUT1p	DOUT1p	DOUT1p	DOUT1p	DOUT1p	DOUT1p	DOUT1p	DOUT1p
G9	GND	GND	GND	GND	GND	GND	GND	GND
G10	VENDOR	DNC!	TCK	NIC	NIC	DNC!	NC	JG10 TCK/GND
H1	NIC	DNC!	NIC	NIC	NIC	NIC	NC	NC
H2	NIC	DNC!	NIC	NIC	NIC	NIC	NC	NC
H3	VCC	VCC	VCC	VCC	VCC	VCC	VCC	VCC
H4	VCC	VCC	VCC	VCC	VCC	VCC	VCC	VCC
H5	VCC	VCC	VCC	VCC	VCC	VCC	VCC	VCC
H6	VCC	VCC	VCC	VCC	VCC	VCC	VCC	VCC
H7	SD	SD	SD	SD	SD	SD	Jump H7-H8 S1-164	JH78 SD
H8	[SD1]	DNC!	NIC	NIC	SD1	SD?		JH79 SD
H9	[ENSD]	ENSD	ENSD	NIC	DNC!	NIC	NC	JH9/GND
H10	VENDOR	DNC!	TDI	NIC	NIC	DNC!	NC	JH10 TDI/GND
J1	NIC	DNC!	NIC	NIC	NIC	NIC	NC	NC
J2	NIC	DNC!	NIC	NIC	NIC	NIC	NC	NC
J3	VCC	VCC	VCC	VCC	VCC	VCC	VCC	VCC
J4	VCC	VCC	VCC	VCC	VCC	VCC	VCC	VCC
J5	VCC	VCC	VCC	VCC	VCC	VCC	VCC	VCC
J6	VCC	VCC	VCC	VCC	VCC	VCC	VCC	VCC
J7	NIC	DNC!	NIC	NIC	NIC	NIC	NC	NC
J8	[-SD12]	DNC!	NIC	NIC	-SD12	NIC	NIC	JJ8 S1/2 165
J9	[RXEN]	RXEN(up)	RXEN(up)	NIC	RXEN (up)	RXEN	NC	JJ9 VCC/GND
J10	VENDOR	DNC	TMS	NIC	NIC	DNC	NC	JJ10 TMS/GND
K1	VPP	NIC	VPP	NIC	(VPP)	DNC!	NC	JK1 VCC
K2	VPP	NIC	VPP	NIC	(VPP)	DNC!	NC	JK2 VCC
K3	NIC	NIC	NIC	NIC	NIC	NIC	NC	NC
K4	NIC	NIC	NIC	NIC	NIC	NIC	NC	NC
K5	NIC	NIC	NIC	NIC	NIC	NIC	NC	NC
K6	NIC	NIC	NIC	NIC	NIC	NIC	NC	NC
K7	NIC	NIC	NIC	NIC	NIC	NIC	NC	NC
K8	VPP	NIC	VPP	NIC	NIC	DNC!	NC	JK8 VCC
K9	VPP	NIC	VPP	NIC	NIC	DNC!	NC	JK9 VCC
K10	[SQEN]	SQEN(up)	SQEN(up)	SQEN(up)	NIC	SQEN	10R_GND	10R_GND

Table 6: Receive Status Signals, refer to [7] for details

Received 20 bit data	RxDv	RxEr
IDLE (<K28.5, D5.6>, <K28.5, D16.2>)	0	0
Carrier extend	0	1
Normal data character	1	0
Receive error propagation (<K30.7, K30.7>)	1	1

Table 7: Receiver characteristics TLK2501

Parameter	Min	Nom	Max	UNIT
$V_{ID}$	Differerential receiver input voltage requirements, $V_{ID}=-V_{RXP}-V_{RXN}$			mV
$V_{cmr}$	1500		$V_{DD}-V_{ID}/2$	mV
$C_I$	Receiver Input capacitance			pF
	Jitter tolerance			UI <sup>2</sup>
$t_{d(Rx\_latency)}$	76		107	bits

Table 8: Parallel 16 bit data, control bit (RxDv, RxEr) and RxClk are 2.5 V TTL compatible

Parameter	Test conditions	Min	Nom	Max	UNIT	
$V_{OH}$	High-level output voltage	$I_{OH}=-1$ mA, $V_{DD}=\text{MIN}$	2.10	2.3	V	
$V_{OL}$	Low-level output voltage	$I_{OL}=1$ mA, $V_{DD}=\text{MIN}$	GND	0.25	0.5	V
$t_{r(slew)}$	Slew rate (rising), magnitude of RxClk, RxEr, RxDv, RxData	0.8 V to 2 V, C=5 pF	0.5		V/ns	
$t_{f(slew)}$	Slew rate (falling), magnitude of RxClk, RxEr, RxDv, RxData	0.8 V to 2 V, C=5 pF	0.5		V/ns	
$t_{su}$	RxData, RxEr, RxDv setup to $\uparrow$ RxClk	50% voltage swing, GTXClk=75 MHz	5.4		ns	
$t_h$	RxData, RxEr, RxDv hold to $\uparrow$ RxClk	50% voltage swing, GTXClk=75 MHz	5.4		ns	

Table 9: The input signals Enable, LckRef, LoopEn and PrbsEn allow debugging the TLK2501

Signal	Type	description
Enable	input	Device Enable
	0	Enable low puts circuit in power down mode, signal detect circuit on serial receiver remains active
	1 jumper to pull up	Active high device enabled
LckRef	input	Lock to reference
	0	LckRef low locks transmitter part to GTXClk and puts receiver output to high impedance.
	1 internal pull-up	LckRef high locks receiver to receive data stream
LoopEn	input	LoopEn
	0 internal pull-down	LoopEn low means standard operation
	1	LoopEn active high activates internal loop-back
PrbsEn	input	Pseudo Random Bit Test Enable
	0 external pull-down	no pseudo random test
	1	PrbsEn high pseudo random bit stream can be monitored RxEr/PRBS_PASS high = valid PRBS received

Table 10: TTL input electrical characteristics over recommended operating conditions (unless otherwise noted), TTL signals: GTXClk, LoopEn, LckRef, PrbsEn

	PARAMETER	TEST CONDITIONS	MIN	NOM	MAX	UNIT
$V_{IH}$	High-level input voltage		1.7		3.6	V
$V_{IL}$	Low-level input voltage				0.80	V
$I_{IH}$	Input high current	$V_{DD} = \text{MAX}, V_{IN} = 2 \text{ V}$			40	$\mu\text{A}$
$I_{IL}$	Input low current	$V_{DD} = \text{MAX}, V_{IN} = 0.4 \text{ V}$	-40			$\mu\text{A}$
$C_I$	Input capacitance	0.8 V to 2 V			4	pF
$t_r$	Rise time GTXClk, TxEn, TxEr	0.8 V to 2 V, C = 5 pF		1		ns
$t_f$	Fall time GTXClk, TxEn, TxEr	2 V to 0.8 V, C = 5 pF		1		ns

Table 11: TLK2501 power characteristic

Parameter	Min.	Typ	Max	UNIT
Supply voltage	2.3	2.5	2.7	V
Supply current		105		mA
Power dissipation		262	500	mW
Operating free air temperature	-40		85	$^{\circ}\text{C}$
PLL startup lock time		0.1	0.4	ms

## 4 Input/Output

The input and output of the O-RxCard comprises the following tasks:

- optical data input from the cavern
- parallel data output to the TELL1
- control signals from the TELL1 to the O-RxCard
- throughput of eight bits from the TELL1 to the front-side
- connection to the reset push button on the front-side
- power connector

The optical connector on the front side is a optical ribbon MTP (MTO) compatible type see [5]. Twelve optical fibers/channels are connected by this connector to the O-RxCard.

The parallel data output shares two connectors with the status and control bits for the TLK2501 and the receive clock. All other signals going from the TELL1 Board to the O-RxCard use these Samtec QTS-100-03-L-D-A high speed connectors as well see tables 12, 13, 14, 15. A large Cu power plane in the middle of the connector enhances signal quality. The signals are grouped to 24 pins for each TLK2501 deserializer using the same pins as for the analog receiver card ADC data. In one group are 16 data bits, the receive status bits, two out of four control bits and the receive clock. Additionally each connector carries

- 80.16 MHz input clock
- one Signal Detect bit coming from the optical receiver. Signal detect will de-assert (low), if one or more optical inputs are below -27 dBm to -31 dBm optical input power.
- the reset signal from the front side push button
- Four bits going straight from the TELL1 Board to a front side connector “control”, table 16
- I<sup>2</sup>C (n.c. on O-RxCard) and JTAG
- one test point (TP pin 163)



In order to monitor the operation of the deserializers, the status of one deserializer (TLK2501-5) can be analyzed with the help of a front side connector “monitor” see table 16.

I<sup>2</sup>C is not used on the O-RxCard, JTAG is connected to the Emcore AC JTAG Test ports. To ensure the usability of the JTAG chain the JTAG signal input (JTAGRX\_TDI pin 199) and output (JTAGRX\_TDO pin 200) are connectable by a jumper.

In addition to the signals directly routed from the TELL1 Board to the front connectors, for each 200-pin connector one test point is accessible on the O-RxCard (TP pin 163). 38 pins per Samtec 200-pin connector remain not connected.

The connectivity for the power planes of the two Samtec 200-pin connectors is shown in table 17, the extra 12 (16) pin power connector carries analog 2.5 V and digital 3.3 V see table 18.

Table 12: Signal distribution on receiver-card connector S1, 4 connectors with 200 pins each are foreseen (Samtec QTS-100-03-L-D-A on the O-Rx-card), the left side shows the corresponding signals on the analog RxCard 1/4

VELO				OT			
Signal	Pin	Pin	Signal	Signal	Pin	Pin	Signal
ADC0(0)	S1-1	S1-2	ADC0(1)	Data0(15)	S1-1	S1-2	Data0(14)
ADC0(2)	S1-3	S1-4	ADC0(3)	Data0(13)	S1-3	S1-4	Data0(12)
ADC0(4)	S1-5	S1-6	ADC0(5)	Data0(11)	S1-5	S1-6	Data0(10)
ADC0(6)	S1-7	S1-8	ADC0(7)	Data0(9)	S1-7	S1-8	Data0(8)
ADC0(8)	S1-9	S1-10	ADC0(9)	Data0(7)	S1-9	S1-10	Data0(6)
ADC1(0)	S1-11	S1-12	ADC1(1)	Data0(5)	S1-11	S1-12	Data0(4)
ADC1(2)	S1-13	S1-14	ADC1(3)	Data0(3)	S1-13	S1-14	Data0(2)
ADC1(4)	S1-15	S1-16	ADC1(5)	Data0(1)	S1-15	S1-16	Data0(0)
ADC1(6)	S1-17	S1-18	ADC1(7)	RxEr0	S1-17	S1-18	RxDv0
ADC1(8)	S1-19	S1-20	ADC1(9)	LckRef0	S1-19	S1-20	Enable012
ADCClk0	S1-21	S1-22	ADCClk1	RxC1k0	S1-21	S1-22	NC
GND	S1-23	S1-24	GND	GND	S1-23	S1-24	GND
ADC2(0)	S1-25	S1-26	ADC2(1)	LED3(2)	S1-25	S1-26	LED3(4)
ADC2(2)	S1-27	S1-28	ADC2(3)	LED3(6)	S1-27	S1-28	LED3(8)
ADC2(4)	S1-29	S1-30	ADC2(5)	NC	S1-29	S1-30	NC
ADC2(6)	S1-31	S1-32	ADC2(7)	NC	S1-31	S1-32	NC
ADC2(8)	S1-33	S1-34	ADC2(9)	NC	S1-33	S1-34	NC
ADC3(0)	S1-35	S1-36	ADC3(1)	NC	S1-35	S1-36	NC
ADC3(2)	S1-37	S1-38	ADC3(3)	NC	S1-37	S1-38	NC
ADC3(4)	S1-39	S1-40	ADC3(5)	NC	S1-39	S1-40	NC
ADC3(6)	S1-41	S1-42	ADC3(7)	NC	S1-41	S1-42	NC
ADC3(8)	S1-43	S1-44	ADC1(9)	NC	S1-43	S1-44	NC
ADCClk2	S1-45	S1-46	ADCClk3	NC	S1-45	S1-46	NC
GND	S1-47	S1-48	GND	GND	S1-47	S1-48	GND
ADC4(0)	S1-49	S1-50	ADC4(1)	Data1(15)	S1-49	S1-50	Data1(14)
ADC4(2)	S1-51	S1-52	ADC4(3)	Data1(13)	S1-51	S1-52	Data1(12)
ADC4(4)	S1-53	S1-54	ADC4(5)	Data1(11)	S1-53	S1-54	Data1(10)
ADC4(6)	S1-55	S1-56	ADC4(7)	Data1(9)	S1-55	S1-56	Data1(8)
ADC4(8)	S1-57	S1-58	ADC4(9)	Data1(7)	S1-57	S1-58	Data1(6)
ADC5(0)	S1-59	S1-60	ADC5(1)	Data1(5)	S1-59	S1-60	Data1(4)
ADC5(2)	S1-61	S1-62	ADC5(3)	Data1(3)	S1-61	S1-62	Data1(2)
ADC5(4)	S1-63	S1-64	ADC5(5)	Data1(1)	S1-63	S1-64	Data1(0)
ADC5(6)	S1-65	S1-66	ADC5(7)	RxEr1	S1-65	S1-66	RxDv1
ADC5(8)	S1-67	S1-68	ADC5(9)	LckRef1	S1-67	S1-68	LoopEn012
ADCClk4	S1-69	S1-70	ADCClk5	RxC1k1	S1-69	S1-70	NC
GND	S1-71	S1-72	GND	GND	S1-71	S1-72	GND
ADC6(0)	S1-73	S1-74	ADC6(1)	Data2(15)	S1-73	S1-74	Data2(14)
ADC6(2)	S1-75	S1-76	ADC6(3)	Data2(13)	S1-75	S1-76	Data2(12)
ADC6(4)	S1-77	S1-78	ADC6(5)	Data2(11)	S1-77	S1-78	Data2(10)
ADC6(6)	S1-79	S1-80	ADC6(7)	Data2(9)	S1-79	S1-80	Data2(8)
ADC6(8)	S1-81	S1-82	ADC6(9)	Data2(7)	S1-81	S1-82	Data2(6)
ADC7(0)	S1-83	S1-84	ADC7(1)	Data2(5)	S1-83	S1-84	Data2(4)
ADC7(2)	S1-85	S1-86	ADC7(3)	Data2(3)	S1-85	S1-86	Data2(2)
ADC7(4)	S1-87	S1-88	ADC7(5)	Data2(1)	S1-87	S1-88	Data2(0)
ADC7(6)	S1-89	S1-90	ADC7(7)	RxEr2	S1-89	S1-90	RxDv2
ADC7(8)	S1-91	S1-92	ADC7(9)	LckRef2	S1-91	S1-92	PrbsEn012
ADCClk6	S1-93	S1-94	ADCClk7	RxC1k2	S1-93	S1-94	ExClk1
GND	S1-95	S1-96	GND	GND	S1-95	S1-96	GND

Table 13: Signal distribution on receiver-card connector S1, 4 connectors with 200 pins each are foreseen (Samtec QTS-100-03-L-D-A on the O-Rx-card), the left side shows the corresponding signals on the analog RxCard 2/4

ADC8(0)	S1-97	S1-98	ADC8(1)	Data3(15)	S1-97	S1-98	Data3(14)
ADC8(2)	S1-99	S1-100	ADC8(3)	Data3(13)	S1-99	S1-100	Data3(12)
ADC8(4)	S1-101	S1-102	ADC8(5)	Data3(11)	S1-101	S1-102	Data3(10)
ADC8(6)	S1-103	S1-104	ADC8(7)	Data3(9)	S1-103	S1-104	Data3(8)
ADC8(8)	S1-105	S1-106	ADC8(9)	Data3(7)	S1-105	S1-106	Data3(6)
ADC9(0)	S1-107	S1-108	ADC9(1)	Data3(5)	S1-107	S1-108	Data3(4)
ADC9(2)	S1-109	S1-110	ADC9(3)	Data3(3)	S1-109	S1-110	Data3(2)
ADC9(4)	S1-111	S1-112	ADC9(5)	Data3(1)	S1-111	S1-112	Data3(0)
ADC9(6)	S1-113	S1-114	ADC9(7)	RxEr3	S1-113	S1-114	RxDv3
ADC9(8)	S1-115	S1-116	ADC9(9)	LckRef3	S1-115	S1-116	Enable345
ADCClk8	S1-117	S1-118	ADCClk9	RxCk3	S1-117	S1-118	NC
GND	S1-119	S1-120	GND	GND	S1-119	S1-120	GND
ADC10(0)	S1-121	S1-122	ADC10(1)	Data4(15)	S1-121	S1-122	Data4(14)
ADC10(2)	S1-123	S1-124	ADC10(3)	Data4(13)	S1-123	S1-124	Data4(12)
ADC10(4)	S1-125	S1-126	ADC10(5)	Data4(11)	S1-125	S1-126	Data4(10)
ADC10(6)	S1-127	S1-128	ADC10(7)	Data4(9)	S1-127	S1-128	Data4(8)
ADC10(8)	S1-129	S1-130	ADC10(9)	Data4(7)	S1-129	S1-130	Data4(6)
ADC11(0)	S1-131	S1-132	ADC11(1)	Data4(5)	S1-131	S1-132	Data4(4)
ADC11(2)	S1-133	S1-134	ADC11(3)	Data4(3)	S1-133	S1-134	Data4(2)
ADC11(4)	S1-135	S1-136	ADC11(5)	Data4(1)	S1-135	S1-136	Data4(0)
ADC11(6)	S1-137	S1-138	ADC11(7)	RxEr4	S1-137	S1-138	RxDv4
ADC11(8)	S1-139	S1-140	ADC11(9)	LckRef4	S1-139	S1-140	LoopEn345
ADCClk10	S1-141	S1-142	ADCClk11	RxCk4	S1-141	S1-142	NC
GND	S1-143	S1-144	GND	GND	S1-143	S1-144	GND
ADC12(0)	S1-145	S1-146	ADC12(1)	con1	S1-145	S1-146	con3
ADC12(2)	S1-147	S1-148	ADC12(3)	con5	S1-147	S1-148	con7
ADC12(4)	S1-149	S1-150	ADC12(5)	NC	S1-149	S1-150	NC
ADC12(6)	S1-151	S1-152	ADC12(7)	NC	S1-151	S1-152	NC
ADC12(8)	S1-153	S1-154	ADC12(9)	NC	S1-153	S1-154	NC
ADC13(0)	S1-155	S1-156	ADC13(1)	NC	S1-155	S1-156	NC
ADC13(2)	S1-157	S1-158	ADC13(3)	NC	S1-157	S1-158	NC
ADC13(4)	S1-159	S1-160	ADC13(5)	NC	S1-159	S1-160	NC
ADC13(6)	S1-161	S1-162	ADC13(7)	NC	S1-161	S1-162	NC
ADC13(8)	S1-163	S1-164	ADC13(9)	TP1	S1-163	S1-164	SD
ADCClk13	S1-165	S1-166	ADCClk13	JJ8/-SD12	S1-165	S1-166	NC
GND	S1-167	S1-168	GND	GND	S1-167	S1-168	GND
ADC14(0)	S1-169	S1-170	ADC14(1)	Data5(15)	S1-169	S1-170	Data5(14)
ADC14(2)	S1-171	S1-172	ADC14(3)	Data5(13)	S1-171	S1-172	Data5(12)
ADC14(4)	S1-173	S1-174	ADC14(5)	Data5(11)	S1-173	S1-174	Data5(10)
ADC14(6)	S1-175	S1-176	ADC14(7)	Data5(9)	S1-175	S1-176	Data5(8)
ADC14(8)	S1-177	S1-178	ADC14(9)	Data5(7)	S1-177	S1-178	Data4(6)
ADC15(0)	S1-179	S1-180	ADC15(1)	Data5(5)	S1-179	S1-180	Data5(4)
ADC15(2)	S1-181	S1-182	ADC15(3)	Data5(3)	S1-181	S1-182	Data5(2)
ADC15(4)	S1-183	S1-184	ADC15(5)	Data5(1)	S1-183	S1-184	Data5(0)
ADC15(6)	S1-185	S1-186	ADC15(7)	RxEr5	S1-185	S1-186	RxDv5
ADC15(8)	S1-187	S1-188	ADC15(9)	LckRef5	S1-187	S1-188	PrbsEn345
ADCClk14	S1-189	S1-190	ADCClk15	RxCk5	S1-189	S1-190	NC
RXADDR5	S1-191	S1-192	RXADDR6	RXADDR5	S1-191	S1-192	RXADDR6
RXSDA	S1-193	S1-194	RXSCL	RXSDA	S1-193	S1-194	RXSCL
JTAG_TMS	S1-195	S1-196	T1	JTAG_TMS	S1-195	S1-196	<i>Reset</i>
JTAG_TRSTB	S1-197	S1-198	JTAG_TCK	JTAG_TRSTB	S1-197	S1-198	JTAG_TCK
JTAG_TDI	S1-199	S1-200	JTAG_TDO	JTAG_TDI	S1-199	S1-200	JTAG_TDO

Table 14: Signal distribution on receiver-card connector S2, 4 connectors with 200 pins each are foreseen (Samtec QTS-100-03-L-D-A on the O-Rx-card), the left side shows the corresponding signals on the analog RxCard 3/4

VELO				OT			
Signal	Pin	Pin	Signal	Signal	Pin	Pin	Signal
ADC0(0)	S2-1	S2-2	ADC0(1)	Data6(15)	S2-1	S2-2	Data6(14)
ADC0(2)	S2-3	S2-4	ADC0(3)	Data6(13)	S2-3	S2-4	Data6(12)
ADC0(4)	S2-5	S2-6	ADC0(5)	Data6(11)	S2-5	S2-6	Data6(10)
ADC0(6)	S2-7	S2-8	ADC0(7)	Data6(9)	S2-7	S2-8	Data6(8)
ADC0(8)	S2-9	S2-10	ADC0(9)	Data6(7)	S2-9	S2-10	Data6(6)
ADC1(0)	S2-11	S2-12	ADC1(1)	Data6(5)	S2-11	S2-12	Data6(4)
ADC1(2)	S2-13	S2-14	ADC1(3)	Data6(3)	S2-13	S2-14	Data6(2)
ADC1(4)	S2-15	S2-16	ADC1(5)	Data6(1)	S2-15	S2-16	Data6(0)
ADC1(6)	S2-17	S2-18	ADC1(7)	RxEr6	S2-17	S2-18	RxDv6
ADC1(8)	S2-19	S2-20	ADC1(9)	LckRef6	S2-19	S2-20	Enable678
ADCClk0	S2-21	S2-22	ADCClk1	RxCk6	S2-21	S2-22	NC
GND	S2-23	S2-24	GND	GND	S2-23	S2-24	GND
ADC2(0)	S2-25	S2-26	ADC2(1)	LED4(2)	S2-25	S2-26	LED4(4)
ADC2(2)	S2-27	S2-28	ADC2(3)	LED4(6)	S2-27	S2-28	LED4(8)
ADC2(4)	S2-29	S2-30	ADC2(5)	NC	S2-29	S2-30	NC
ADC2(6)	S2-31	S2-32	ADC2(7)	NC	S2-31	S2-32	NC
ADC2(8)	S2-33	S2-34	ADC2(9)	NC	S2-33	S2-34	NC
ADC3(0)	S2-35	S2-36	ADC3(1)	NC	S2-35	S2-36	NC
ADC3(2)	S2-37	S2-38	ADC3(3)	NC	S2-37	S2-38	NC
ADC3(4)	S2-39	S2-40	ADC3(5)	NC	S2-39	S2-40	NC
ADC3(6)	S2-41	S2-42	ADC3(7)	NC	S2-41	S2-42	NC
ADC3(8)	S2-43	S2-44	ADC1(9)	NC	S2-43	S2-44	NC
ADCClk2	S2-45	S2-46	ADCClk3	NC	S2-45	S2-46	NC
GND	S2-47	S2-48	GND	GND	S2-47	S2-48	GND
ADC4(0)	S2-49	S2-50	ADC4(1)	Data7(15)	S2-49	S2-50	Data7(14)
ADC4(2)	S2-51	S2-52	ADC4(3)	Data7(13)	S2-51	S2-52	Data7(12)
ADC4(4)	S2-53	S2-54	ADC4(5)	Data7(11)	S2-53	S2-54	Data7(10)
ADC4(6)	S2-55	S2-56	ADC4(7)	Data7(9)	S2-55	S2-56	Data7(8)
ADC4(8)	S2-57	S2-58	ADC4(9)	Data7(7)	S2-57	S2-58	Data7(6)
ADC5(0)	S2-59	S2-60	ADC5(1)	Data7(5)	S2-59	S2-60	Data7(4)
ADC5(2)	S2-61	S2-62	ADC5(3)	Data7(3)	S2-61	S2-62	Data7(2)
ADC5(4)	S2-63	S2-64	ADC5(5)	Data7(1)	S2-63	S2-64	Data7(0)
ADC5(6)	S2-65	S2-66	ADC5(7)	RxEr7	S2-65	S2-66	RxDv7
ADC5(8)	S2-67	S2-68	ADC5(9)	LckRef7	S2-67	S2-68	LoopEn678
ADCClk4	S2-69	S2-70	ADCClk5	RxCk7	S2-69	S2-70	NC
GND	S2-71	S2-72	GND	GND	S2-71	S2-72	GND
ADC6(0)	S2-73	S2-74	ADC6(1)	Data8(15)	S2-73	S2-74	Data8(14)
ADC6(2)	S2-75	S2-76	ADC6(3)	Data8(13)	S2-75	S2-76	Data8(12)
ADC6(4)	S2-77	S2-78	ADC6(5)	Data8(11)	S2-77	S2-78	Data8(10)
ADC6(6)	S2-79	S2-80	ADC6(7)	Data8(9)	S2-79	S2-80	Data8(8)
ADC6(8)	S2-81	S2-82	ADC6(9)	Data8(7)	S2-81	S2-82	Data8(6)
ADC7(0)	S2-83	S2-84	ADC7(1)	Data8(5)	S2-83	S2-84	Data8(4)
ADC7(2)	S2-85	S2-86	ADC7(3)	Data8(3)	S2-85	S2-86	Data8(2)
ADC7(4)	S2-87	S2-88	ADC7(5)	Data8(1)	S2-87	S2-88	Data8(0)
ADC7(6)	S2-89	S2-90	ADC7(7)	RxEr8	S2-89	S2-90	RxDv8
ADC7(8)	S2-91	S2-92	ADC7(9)	LckRef8	S2-91	S2-92	PrbsEn678
ADCClk6	S2-93	S2-94	ADCClk7	RxCk8	S2-93	S2-94	ExClk2
GND	S2-95	S2-96	GND	GND	S2-95	S2-96	GND

Table 15: Signal distribution on receiver-card connector S2, 4 connectors with 200 pins each are foreseen (Samtec QTS-100-03-L-D-A on the O-Rx-card), the left side shows the corresponding signals on the analog RxCard 4/4. In the enumeration of the control signals 9AB stands for data block 9, A = 10, B = 11

ADC8(0)	S2-97	S2-98	ADC8(1)	Data9(15)	S2-97	S2-98	Data9(14)
ADC8(2)	S2-99	S2-100	ADC8(3)	Data9(13)	S2-99	S2-100	Data9(12)
ADC8(4)	S2-101	S2-102	ADC8(5)	Data9(11)	S2-101	S2-102	Data9(10)
ADC8(6)	S2-103	S2-104	ADC8(7)	Data9(9)	S2-103	S2-104	Data9(8)
ADC8(8)	S2-105	S2-106	ADC8(9)	Data9(7)	S2-105	S2-106	Data9(6)
ADC9(0)	S2-107	S2-108	ADC9(1)	Data9(5)	S2-107	S2-108	Data9(4)
ADC9(2)	S2-109	S2-110	ADC9(3)	Data9(3)	S2-109	S2-110	Data9(2)
ADC9(4)	S2-111	S2-112	ADC9(5)	Data9(1)	S2-111	S2-112	Data9(0)
ADC9(6)	S2-113	S2-114	ADC9(7)	RxEr9	S2-113	S2-114	RxDv9
ADC9(8)	S2-115	S2-116	ADC9(9)	LckRef9	S2-115	S2-116	Enable9AB
ADCClk8	S2-117	S2-118	ADCClk9	RxCk9	S2-117	S2-118	NC
GND	S2-119	S2-120	GND	GND	S2-119	S2-120	GND
ADC10(0)	S2-121	S2-122	ADC10(1)	Data10(15)	S2-121	S2-122	Data10(14)
ADC10(2)	S2-123	S2-124	ADC10(3)	Data10(13)	S2-123	S2-124	Data10(12)
ADC10(4)	S2-125	S2-126	ADC10(5)	Data10(11)	S2-125	S2-126	Data10(10)
ADC10(6)	S2-127	S2-128	ADC10(7)	Data10(9)	S2-127	S2-128	Data10(8)
ADC10(8)	S2-129	S2-130	ADC10(9)	Data10(7)	S2-129	S2-130	Data10(6)
ADC11(0)	S2-131	S2-132	ADC11(1)	Data10(5)	S2-131	S2-132	Data10(4)
ADC11(2)	S2-133	S2-134	ADC11(3)	Data10(3)	S2-133	S2-134	Data10(2)
ADC11(4)	S2-135	S2-136	ADC11(5)	Data10(1)	S2-135	S2-136	Data10(0)
ADC11(6)	S2-137	S2-138	ADC11(7)	RxEr10	S2-137	S2-138	RxDv10
ADC11(8)	S2-139	S2-140	ADC11(9)	LckRef10	S2-139	S2-140	LoopEn9AB
ADCClk10	S2-141	S2-142	ADCClk11	RxCk10	S2-141	S2-142	NC
GND	S2-143	S2-144	GND	GND	S2-143	S2-144	GND
ADC12(0)	S2-145	S2-146	ADC12(1)	con9	S2-145	S2-146	con11
ADC12(2)	S2-147	S2-148	ADC12(3)	con13	S2-147	S2-148	con15
ADC12(4)	S2-149	S2-150	ADC12(5)	NC	S2-149	S2-150	NC
ADC12(6)	S2-151	S2-152	ADC12(7)	NC	S2-151	S2-152	NC
ADC12(8)	S2-153	S2-154	ADC12(9)	NC	S2-153	S2-154	NC
ADC13(0)	S2-155	S2-156	ADC13(1)	NC	S2-155	S2-156	NC
ADC13(2)	S2-157	S2-158	ADC13(3)	NC	S2-157	S2-158	NC
ADC13(4)	S2-159	S2-160	ADC13(5)	NC	S2-159	S2-160	NC
ADC13(6)	S2-161	S2-162	ADC13(7)	NC	S2-161	S2-162	NC
ADC13(8)	S2-163	S2-164	ADC13(9)	TP2	S2-163	S2-164	SD
ADCClk13	S2-165	S2-166	ADCClk13	JJ8/-SD12	S2-165	S2-166	NC
GND	S2-167	S2-168	GND	GND	S2-167	S2-168	GND
ADC14(0)	S2-169	S2-170	ADC14(1)	Data11(15)	S2-169	S2-170	Data11(14)
ADC14(2)	S2-171	S2-172	ADC14(3)	Data11(13)	S2-171	S2-172	Data11(12)
ADC14(4)	S2-173	S2-174	ADC14(5)	Data11(11)	S2-173	S2-174	Data11(10)
ADC14(6)	S2-175	S2-176	ADC14(7)	Data11(9)	S2-175	S2-176	Data11(8)
ADC14(8)	S2-177	S2-178	ADC14(9)	Data11(7)	S2-177	S2-178	Data11(6)
ADC15(0)	S2-179	S2-180	ADC15(1)	Data11(5)	S2-179	S2-180	Data11(4)
ADC15(2)	S2-181	S2-182	ADC15(3)	Data11(3)	S2-181	S2-182	Data11(2)
ADC15(4)	S2-183	S2-184	ADC15(5)	Data11(1)	S2-183	S2-184	Data11(0)
ADC15(6)	S2-185	S2-186	ADC15(7)	RxEr11	S2-185	S2-186	RxDv11
ADC15(8)	S2-187	S2-188	ADC15(9)	LckRef11	S2-187	S2-188	PrbsEn9AB
ADCClk14	S2-189	S2-190	ADCClk15	RxCk11	S2-189	S2-190	NC
RXADDR5	S2-191	S2-192	RXADDR6	RXADDR5	S2-191	S2-192	RXADDR6
RXSDA	S2-193	S2-194	RXSCL	RXSDA	S2-193	S2-194	RXSCL
JTAG_TMS	S2-195	S2-196	T2	JTAG_TMS	S2-195	S2-196	<i>Reset</i>
JTAG_TRSTB	S2-197	S2-198	JTAG_TCK	JTAG_TRSTB	S2-197	S2-198	JTAG_TCK
JTAG_TDI	S2-199	S2-200	JTAG_TDO	JTAG_TDI	S2-199	S2-200	JTAG_TDO

Table 16: One Control and one Monitor connector are placed on the front side of the TO-RxCard. The connectors are 16 pin 1/10 inch connectors from 3M.

pin	Control	Monitor
1	S1-145	RXDV4
2	GND	GND
3	S1-146	RXER4
4	GND	GND
5	S1-147	LCKREF4
6	GND	GND
7	S1-148	LOOPEN345
8	GND	GND
9	S2-145	ENABLE345
10	GND	GND
11	S2-146	PRBSEN345
12	GND	GND
13	S2-147	Rx-Clk4
14	GND	GND
15	S2-148	Clk-80-Mon
16	GND	GND

Table 17: Power Plates of 200 Pin Samtec connector, here O-RxCard implementation

Plate	Name	A-RxCard	O-RxCard
0	VccRx	3.3 V	2.5 V
1	GND		
2	VccRx	3.3 V	2.5 V
3	GND		

Table 18: Power Connector, 1/10 inch 2x10 pin socket on the O-Rx board side foreseen

signal	pin	signal	pin
AP5V	1	AP5V	2
AGND	3	AGND	4
AN5V	5	AN5V	6
AGND	7	AGND	8
A2P5	9	A2P5	10
D3V3	11	D3V3	12
NC	13	NC	14
NC	15	NC	16

## 5 LEDs

In addition to the control and monitor connectors a set of 4x4 LEDs has been placed on the front plate, see table 19. The first 4 LEDs show the power supply to the O-RxCard, the second 4 LEDs go red when more than 2.5 V are applied to the power plate 2.5 V digital inputs. The third and fourth LED indicate signals coming from the L1 Common Board via the two Samtec connectors. 4 signals can so be controlled by each preprocessing FPGA on the TELL1 Board.

Table 19: LEDs placed on the front side of the O-Rx Card. The LEDs are arranged in groups of four

pin	LED 1	LED 2	LED 3	LED 4
1	GND	GND	GND	GND
2	+3.3 V	2.5 V OVER	S1-25	S2-25
3	GND	GND	GND	GND
4	+5 V	2.5 V OVER	S1-26	S2-26
5	GND	GND	GND	GND
6	2.5 V	2.5 V OVER	S1-27	S2-27
7	-5 V	GND	GND	GND
8	GND	2.5 V OVER	S1-28	S2-28

## 6 Clock distribution

The TLK2501 extract the clock (RxClk) from the received serial data and outputs it to the TELL1 board via controlled 50 Ohm traces and the two high speed connectors. On the TELL1 board the RxClk of every deserializer will be input to a dedicated clock input of the corresponding PreProcessor FPGA. In addition a clock (GTxClock) has to be supplied to the TLK2501, in order to make clock locking on the input data possible. A local oscillator<sup>3</sup>, as well as a clock from the TELL1 board can be used. To drive all twelve inputs an extra IC amplifies, the clock signal on the O-RxCard, the Fairchild 74LCX00 is a 3.3 V  $V_{CC}$  type with 5.3 ns maximum propagation delay.

---

<sup>3</sup>Custom 80.157332 MHz (LHC frequency x 2) oscillators are used



## 7 Power

The power consumption on the O-RxCard is dominated by the 12 deserializer TLK2501 and the optical receiver. In addition the clock driver, the quartz and the LEDs have to be accounted for, table 20.

Table 20: Power consumption of all parts on the O-RxCard

Device	Name	Qty	Voltage [V]			current [mA]			[W]
			min.	typ.	max.	min.	typ.	max.	
deserializer	TLK2501	12	2.3	2.5	2.7		105	< 190	<6
optical receiver	Emcore MRX9512	1	3.135	3.3	3.465		350	450	<1.6
quartz	IQXO-71	1	3.0	3.3	3.6		30		<0.1
clock driver	74LCX00	1	2.0	3.3	3.6			100	<0.36
LEDs	2X4(Farnell)	16	1.8	2.5	3.6	5	10	15	<0.054
sum (2.5 V)			2.3	2.5	2.7		1270	2300	<6.2
sum (3.3 V)			3.135	3.3	3.465		430	600	<2.0
sum O-RxCard									<8.5

The O-RxCard uses 2.5 V for the deserializers and 3.3 V for the optical receiver, the quartz and clock driver. To ensure reliable operation in a noisy environment, the 2.5 V power for the digital part of the TLK2501 deserializer is connected via power planes of the high speed Samtec connectors (see table 17), analog 2.5 V and digital 3.3 V are supplied by an extra power connector, table 18. Using the same path for the 2.5 V power and the 80 MHz 2.5 V signals avoids additional skew and loops. The analog 2.5 V for the TLK2501 is filtered with two C L C combinations for each device, special care is taken on the TELL1 board for the generation of the analog 2.5 V too. The 3.3 V digital for the optical receiver has a C L C blocking, the quartz and oscillator share a 4.7  $\mu$ F capacitor. To further improve the power distribution, layers 2 and 7 are ground, layer 3 is analog 2.5 V, layer 6 is 2.5 V digital and 3.3 V digital. Around the optical receiver layer 6 is reserved to the inductive filtered part of the 3.3 V, figure 17.

As the analog receiver card (A-RxCard) for the TELL1 board uses a different voltage (3.3 V) on the power planes table 17, a set of LEDs (2.5 V over) will warn the user when combining a TELL1 board configured for the A-RxCard with an O-RxCard, see figure 11. Mind that the TLK2501 is specified for an absolute maximum 3.0 V input voltage, so 3.3 V will eventually destroy the deserializers!

## 8 PCB technology

The PCB is a eight layer type with controlled impedance layout on the top and bottom see table 21. In order to achieve 50 Ohms for the single ended LVTTTL level parallel signal coming from the TLK2501 and the differential 100 Ohm for the fast 1.6 GHz going from the optical receivers to the TLK2501 dimensions have been chosen as shown in figure 3, table 22.

Table 21: The PCB consists of 8 layers, controlled impedance data on the top and bottom side, two control signal layers in the middle, analog power, digital power and two ground layers

layer	signals
1	Signal (1.6 GHz + 80 MHz)
2	GND
3	A2P5 (Analog +2.5 V)
4	Signal
5	Signal
6	GND
7	VccRx = D2V5, D3V3 (Digital +2.5 V , +3.3 V)
8	Signal (1.6 GHz + 80 MHz)

Table 22: Trace dimensions for the 1.6 GHz differential traces

parameter	abbreviation	dimension
trace width	W	6 mil = 0.150 mm
space between traces	S	0.45 mm
Cu	t	0.035 mm
prepreg	h	4 mil = 0.1 mm
dielectric constant FR4	$\epsilon_r$	4.1
impedance	$Z_0$	49.6 Ohm
differential impedance	$Z_{diff}$	98.5 Ohm

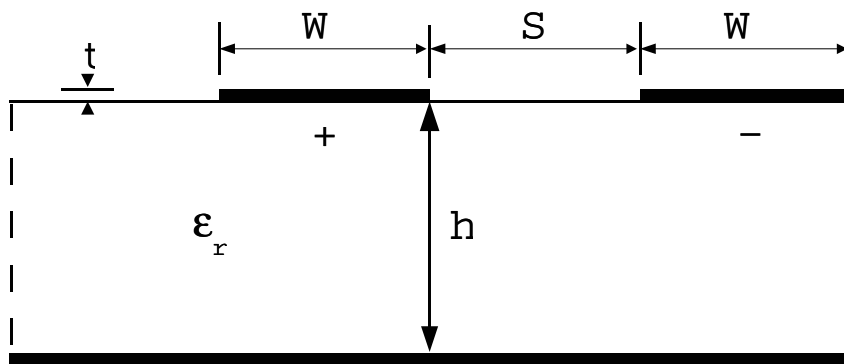


Figure 3: Trace dimensions for the 1.6 GHz signals, see table 22. The high speed signals are led in differential pairs on the surface of the PCB.



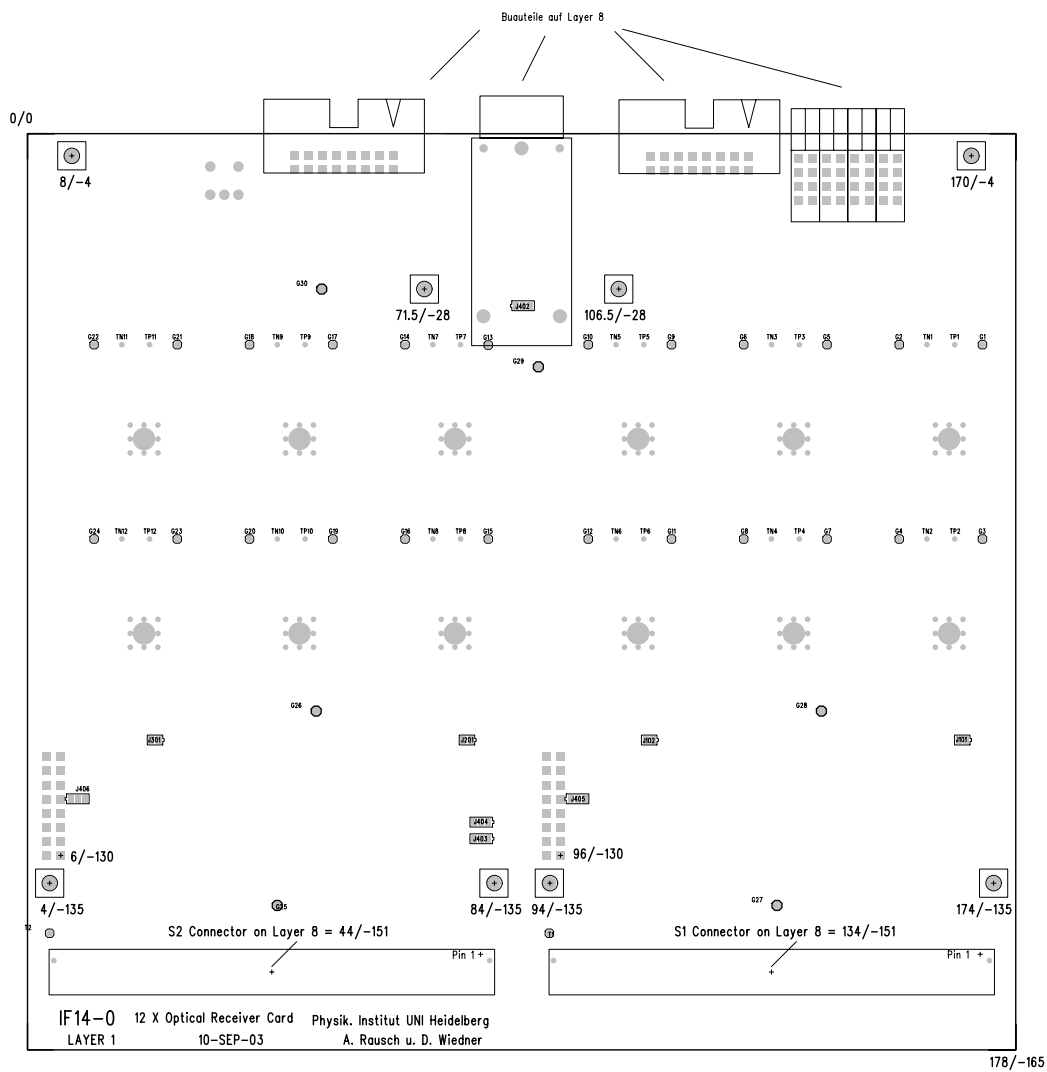


Figure 5: Mechanical dimension of the O-RxCard, all dimensions use relative coordinates in mm from top left corner

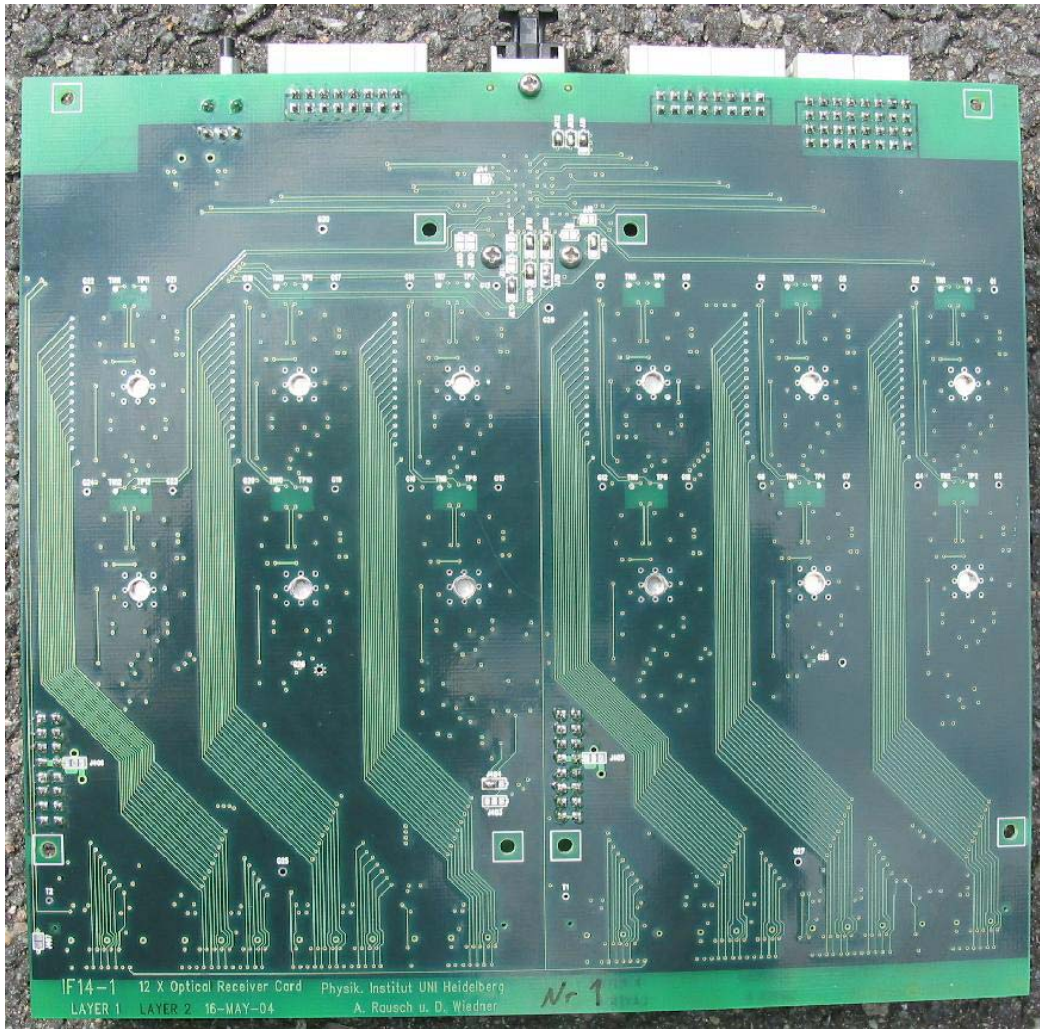


Figure 6: IF14-1 layer 1

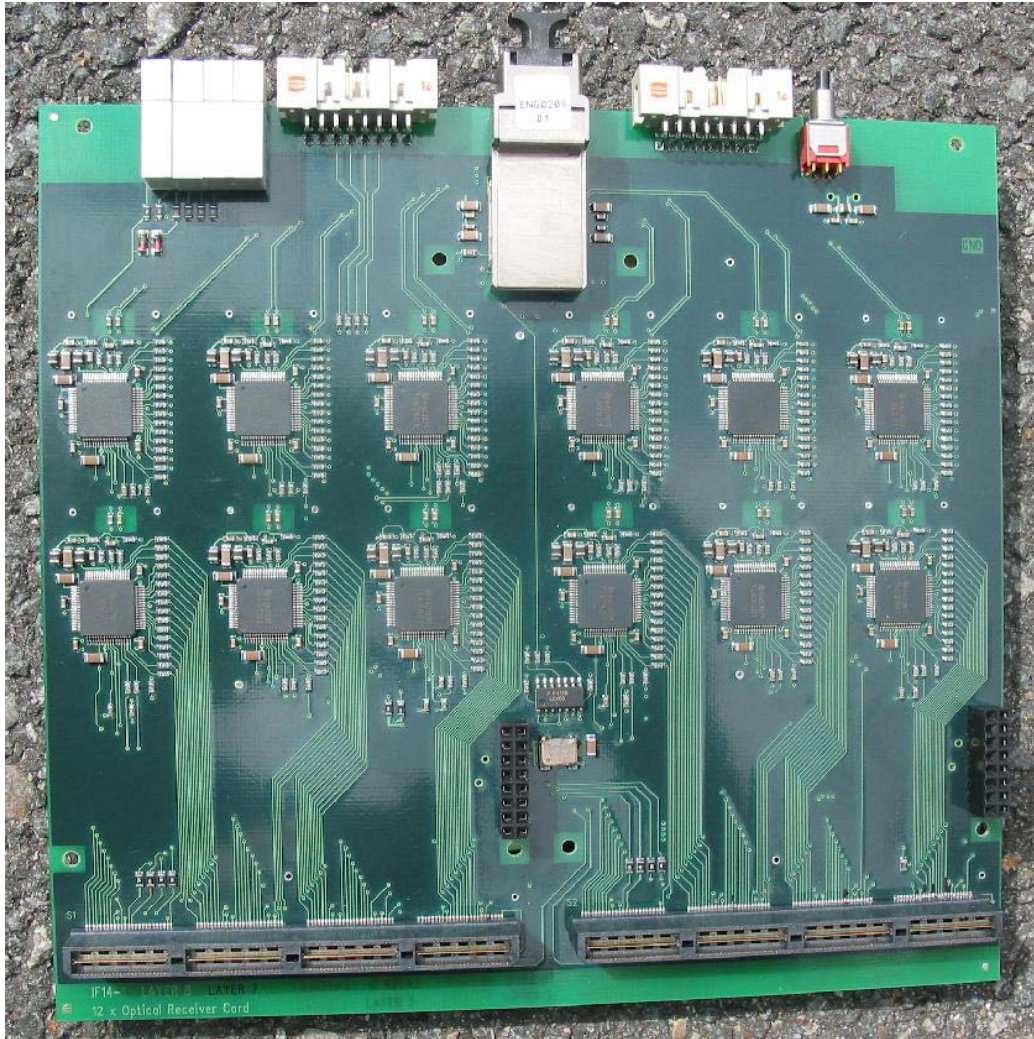


Figure 7: IF14-1 layer 8

# B Schematics

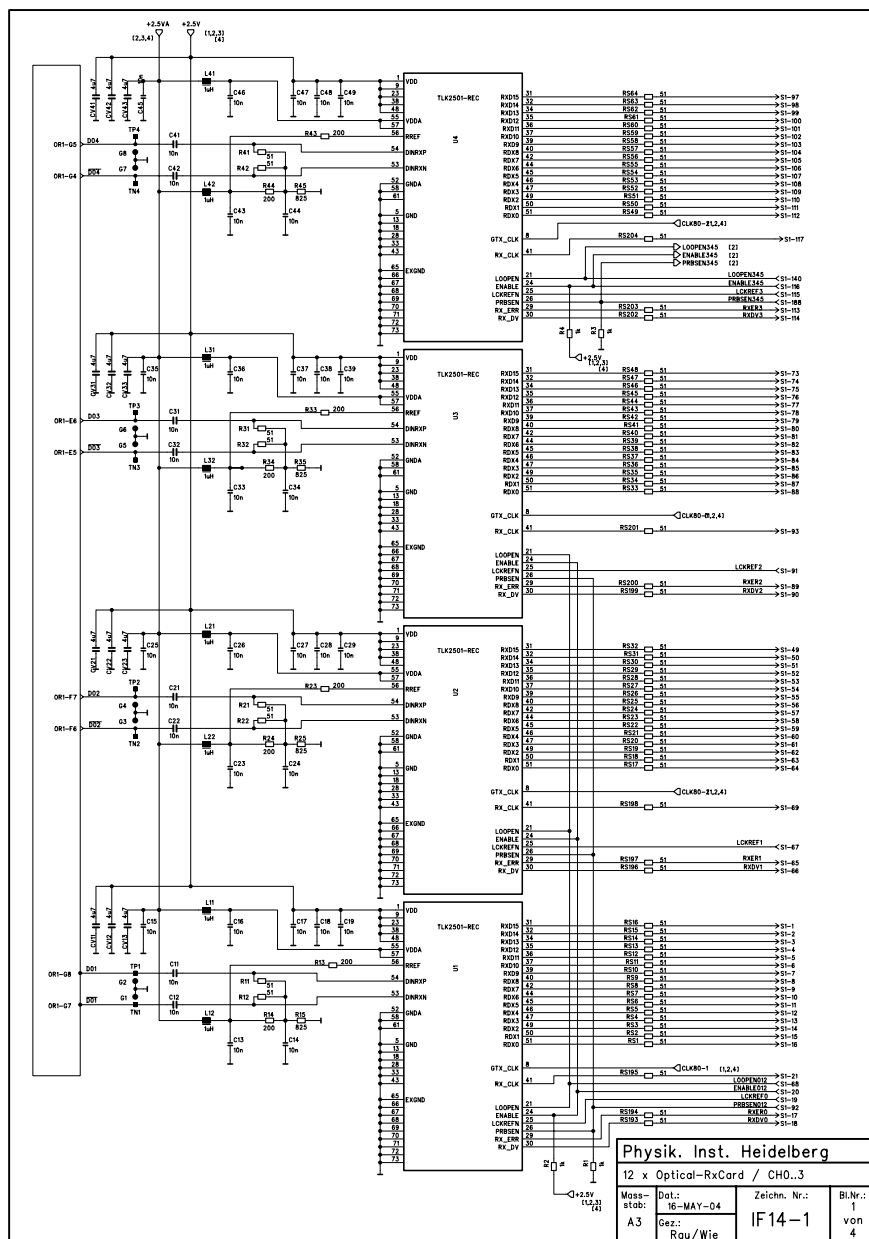
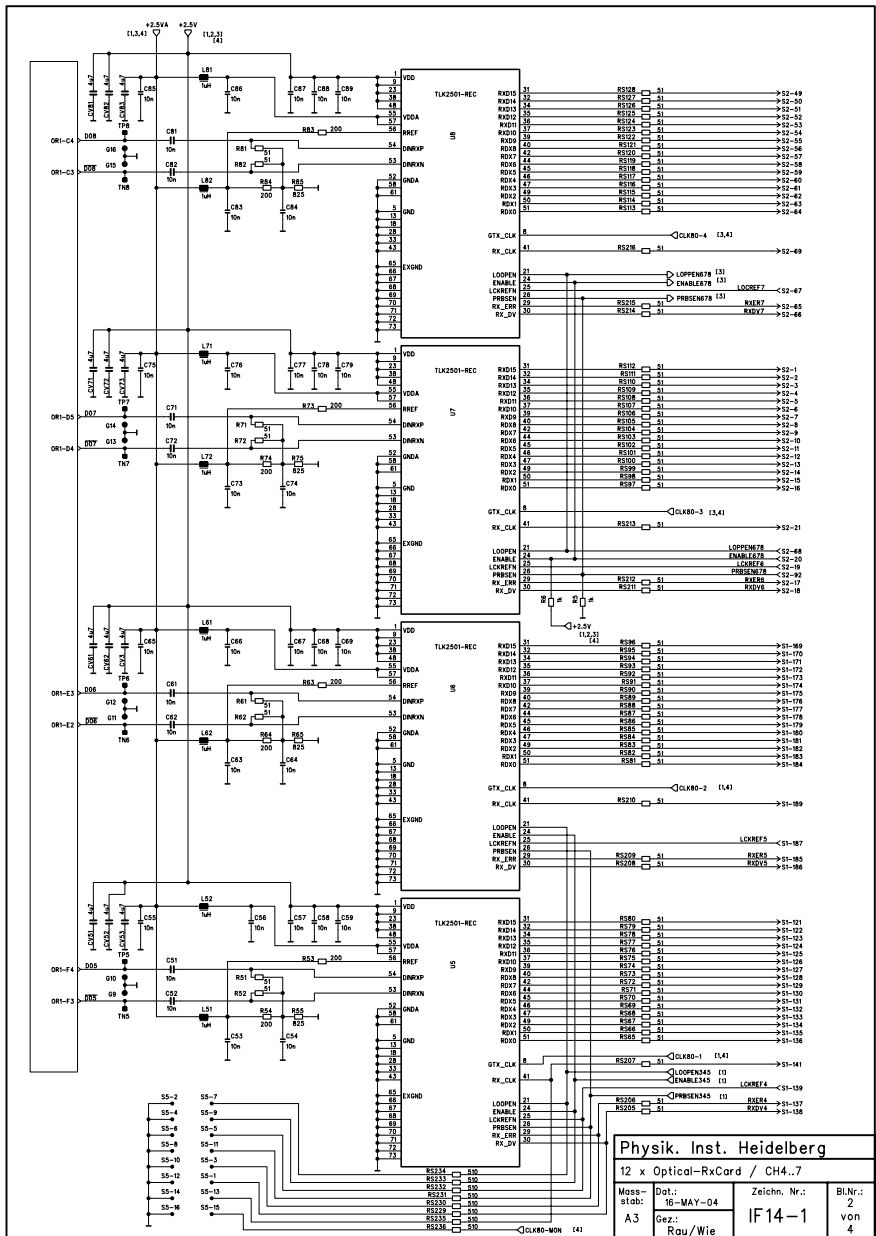


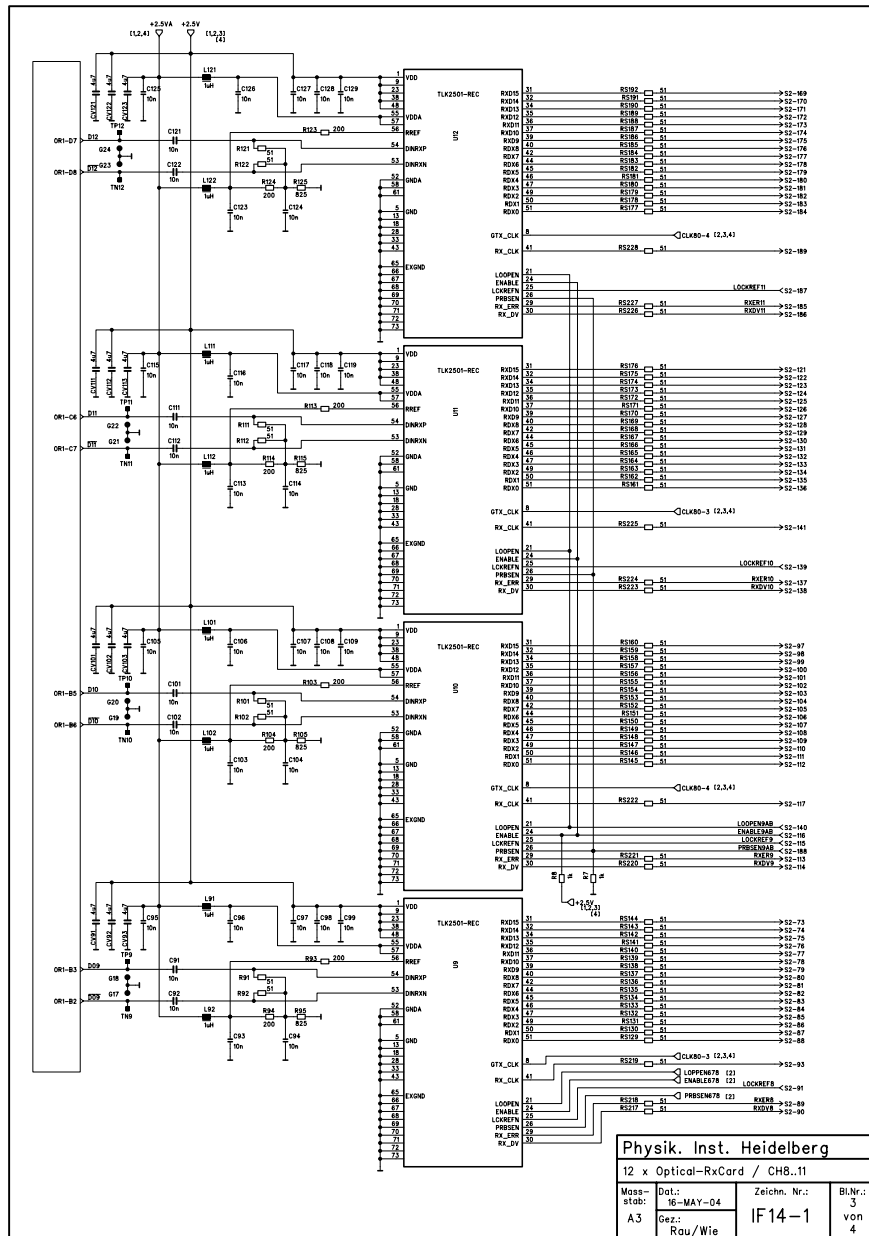
Figure 8: Schematics 1/4





<b>Physik. Inst. Heidelberg</b>			
12 x Optical-RxCARD / CH4.7			
Masstab:	Dat:	Zeichn. Nr.:	BlNr.:
A3	16-MAY-04	IF14-1	2
Gez.:	Rau/Wie		4

Figure 9: Schematics 2/4



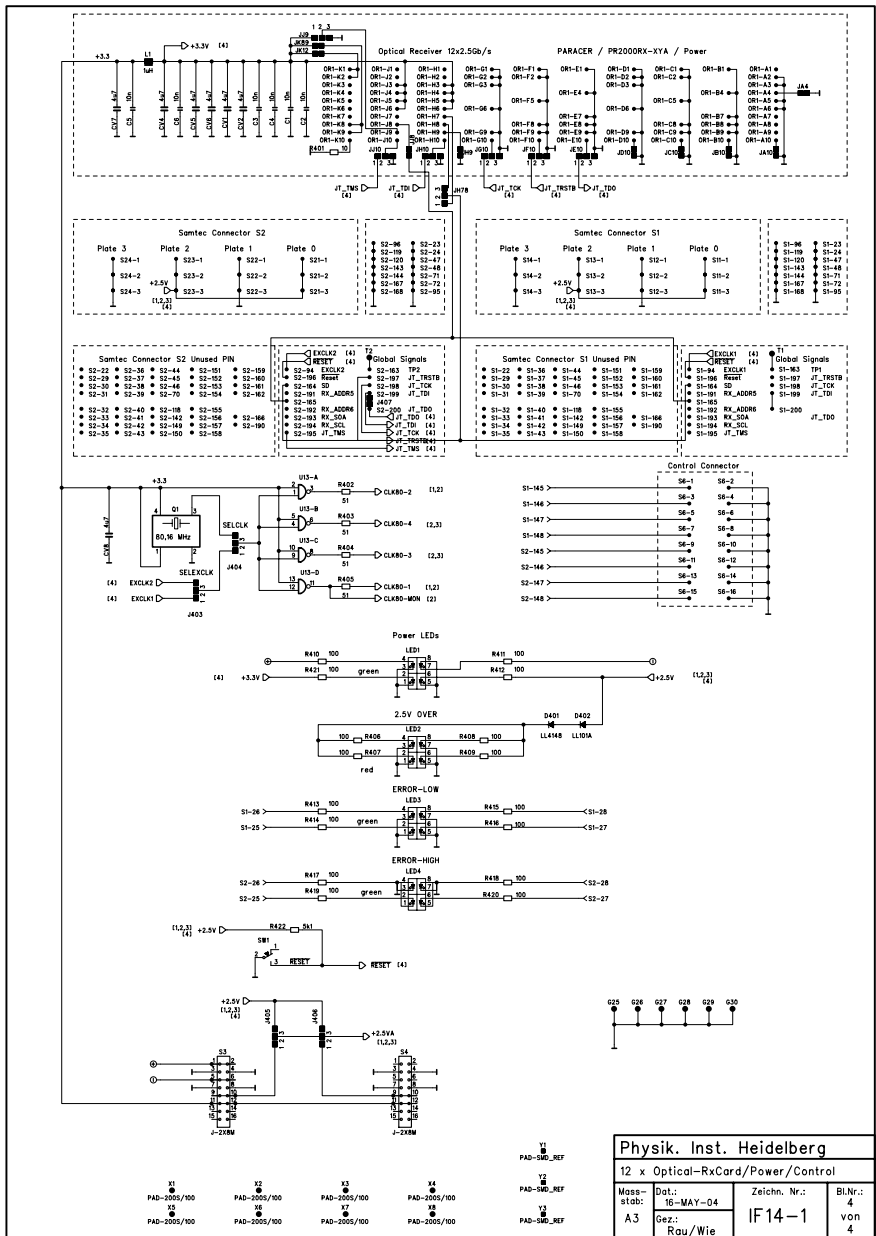


Figure 11: Schematics 4/4

# C Layout

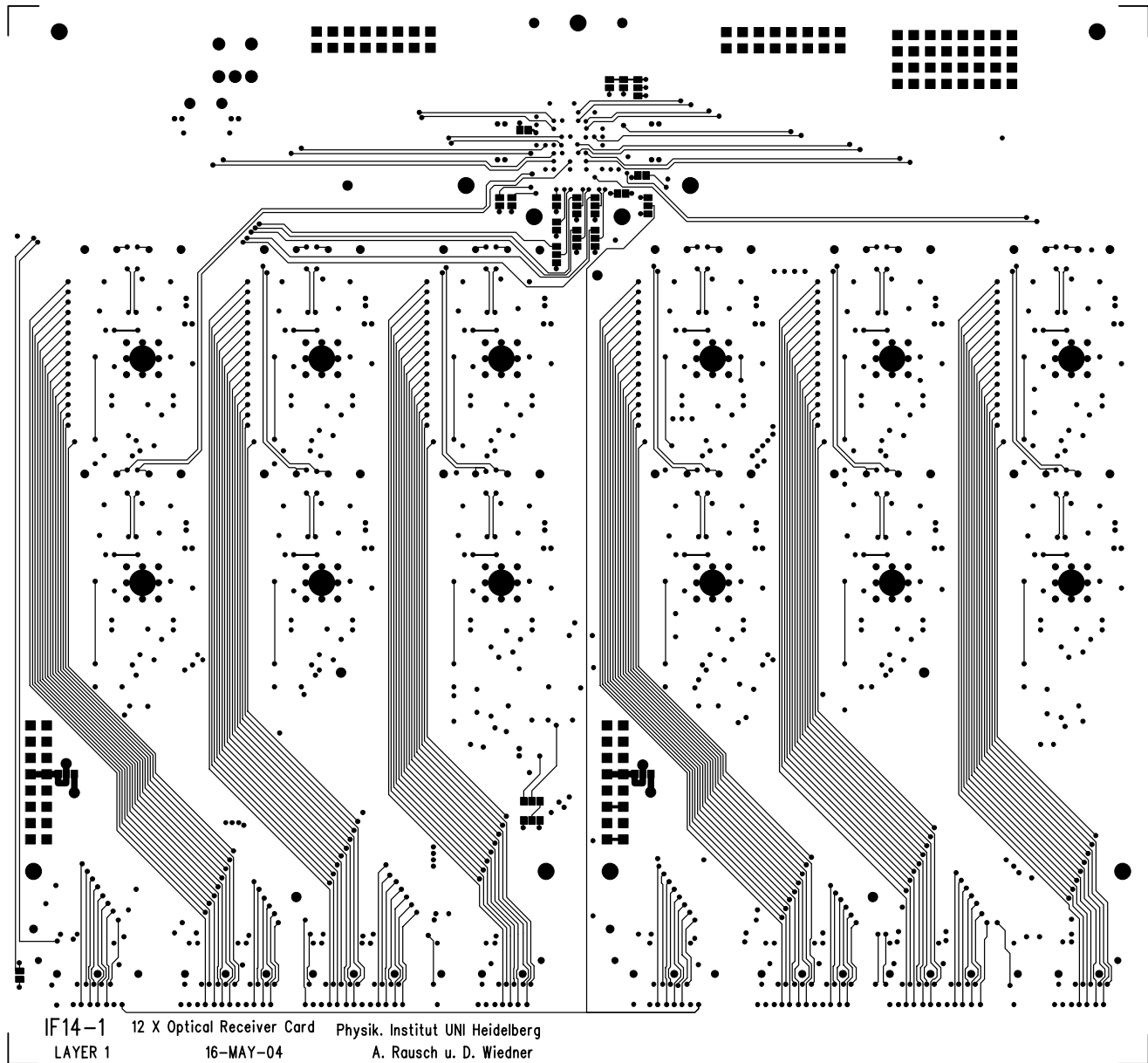


Figure 12: *Layout layer 1/8*

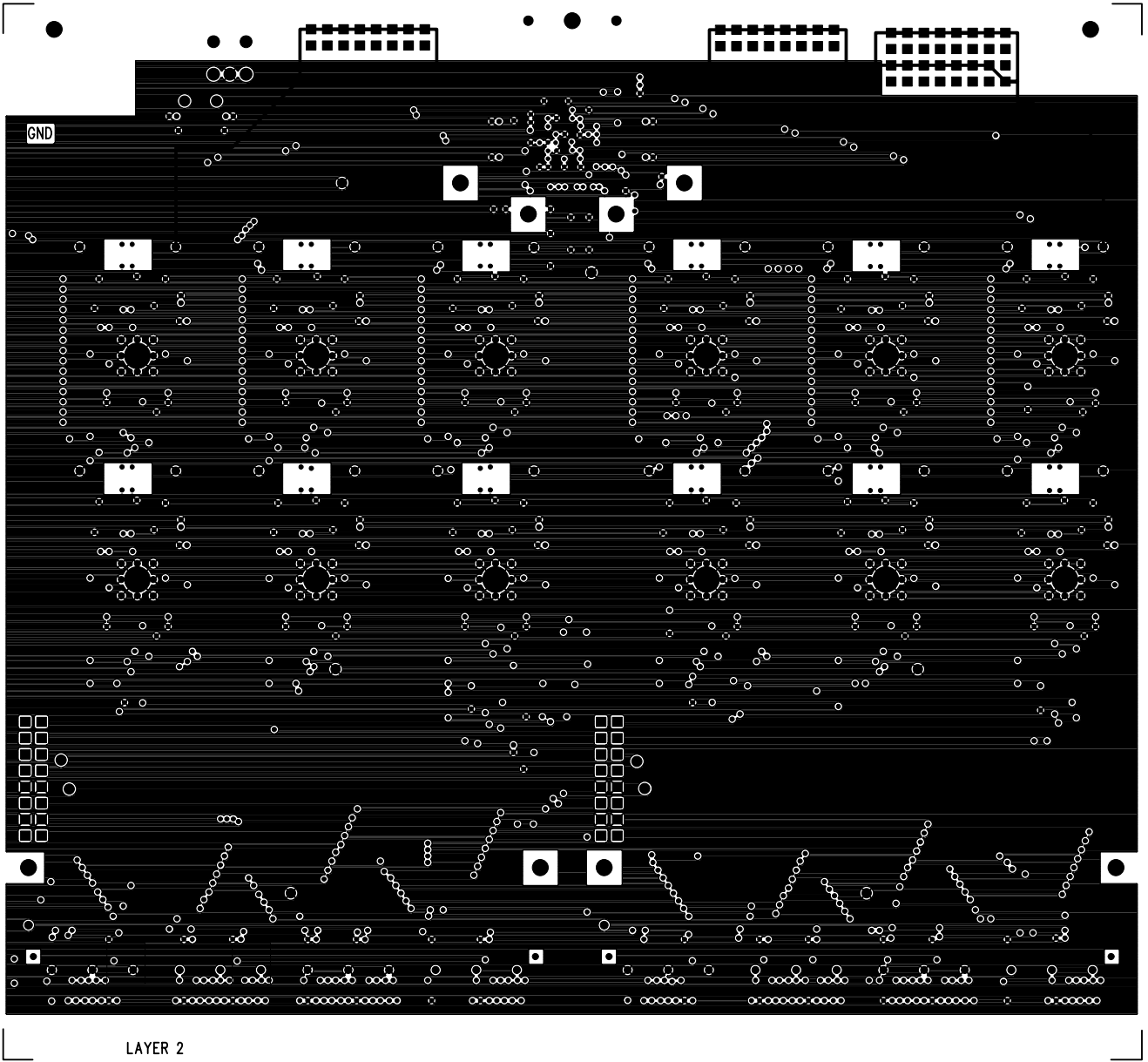


Figure 13: *Layout layer 2/8*

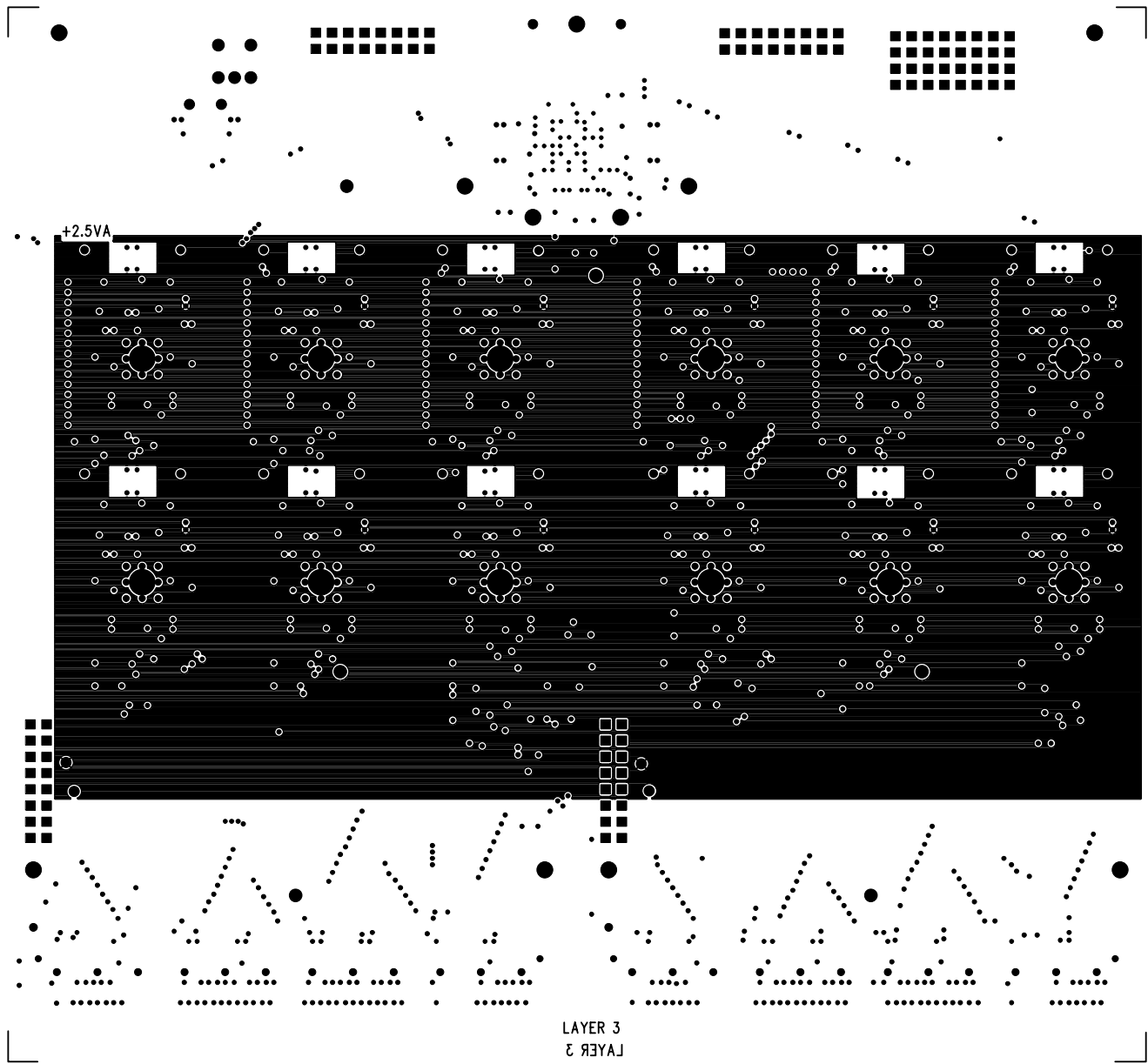


Figure 14: *Layout layer 3/8*

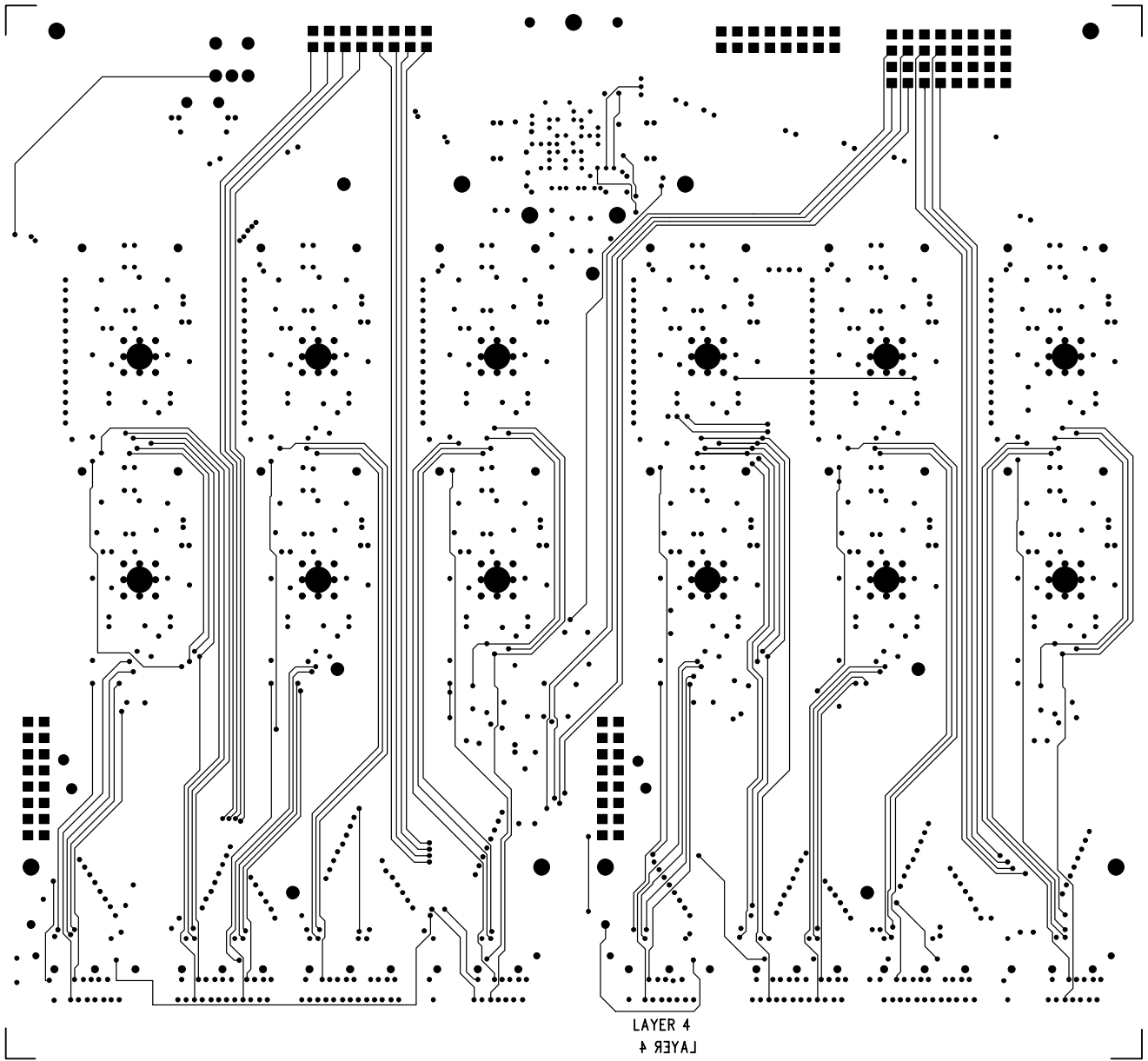


Figure 15: *Layout layer 4/8*

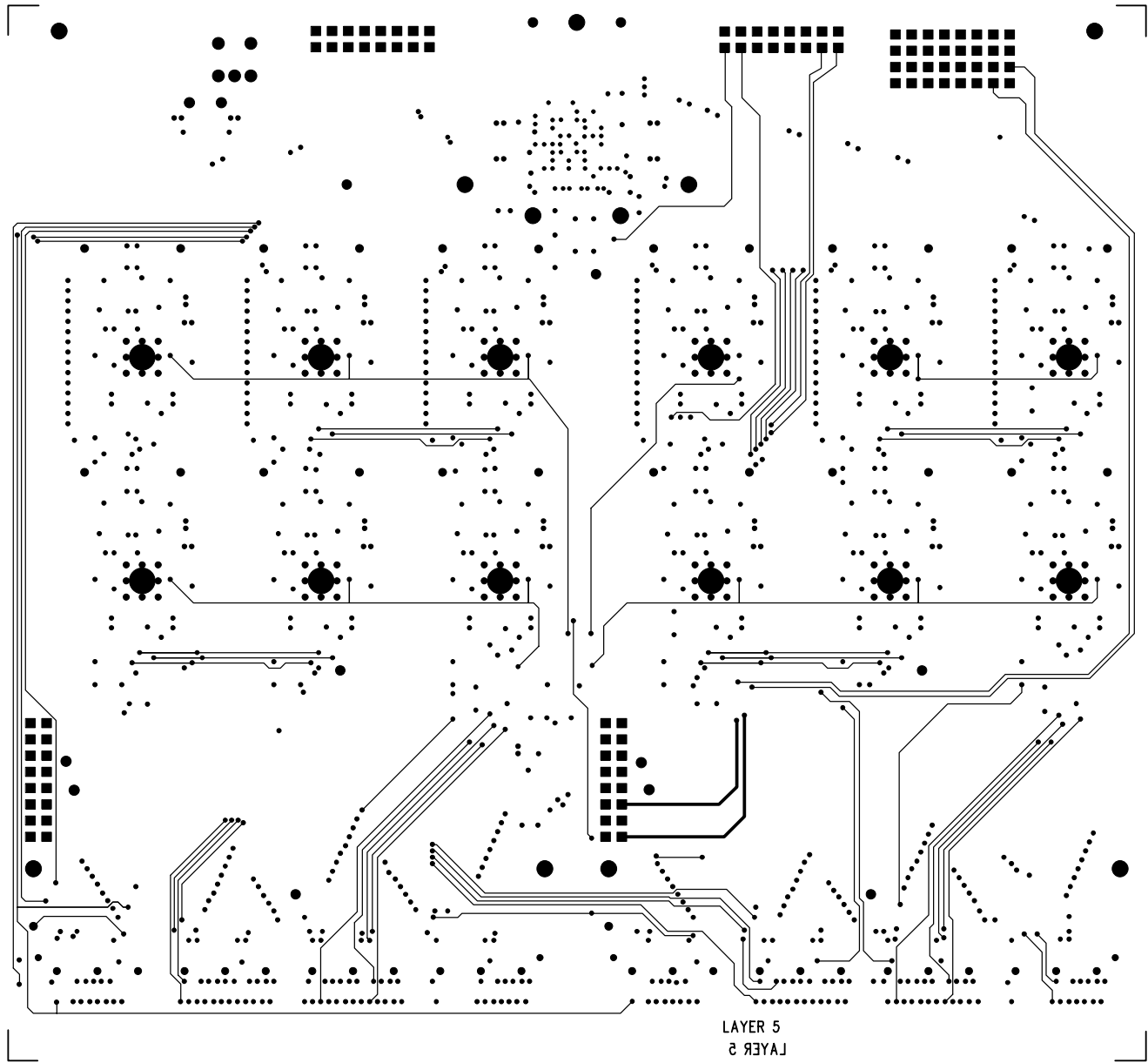


Figure 16: *Layout layer 5/8*



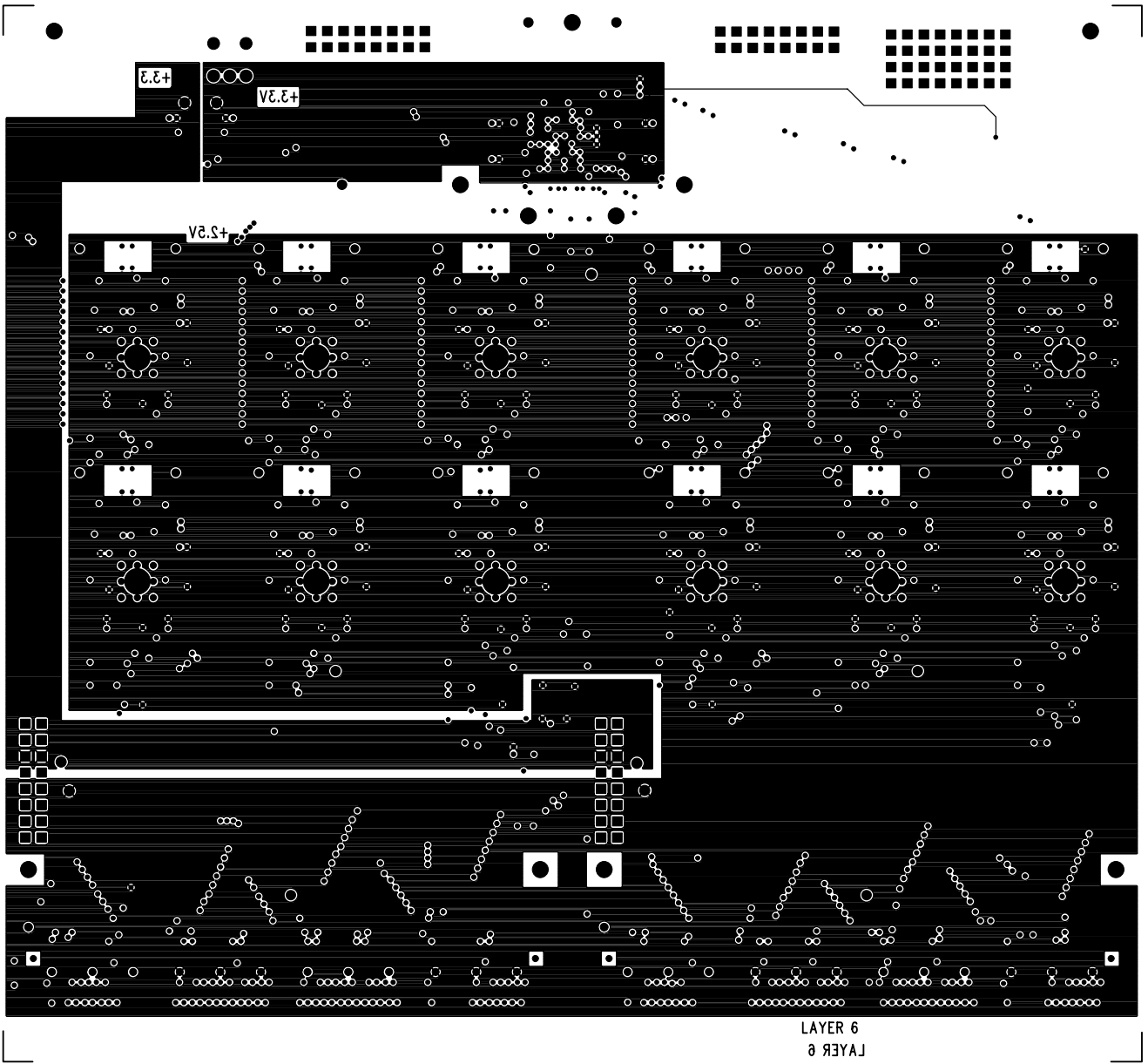


Figure 17: *Layout layer 6/8*

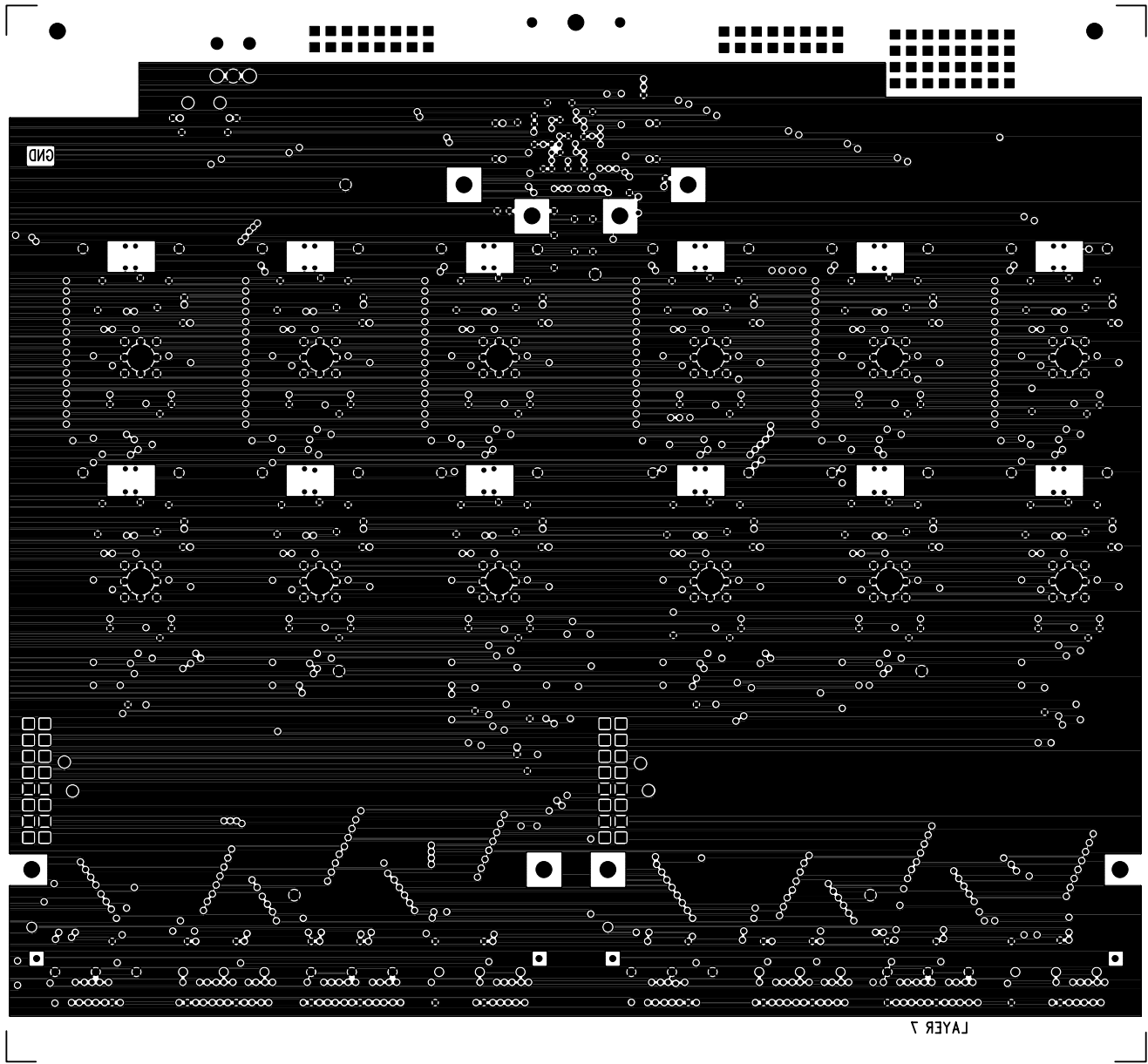


Figure 18: *Layout layer 7/8*

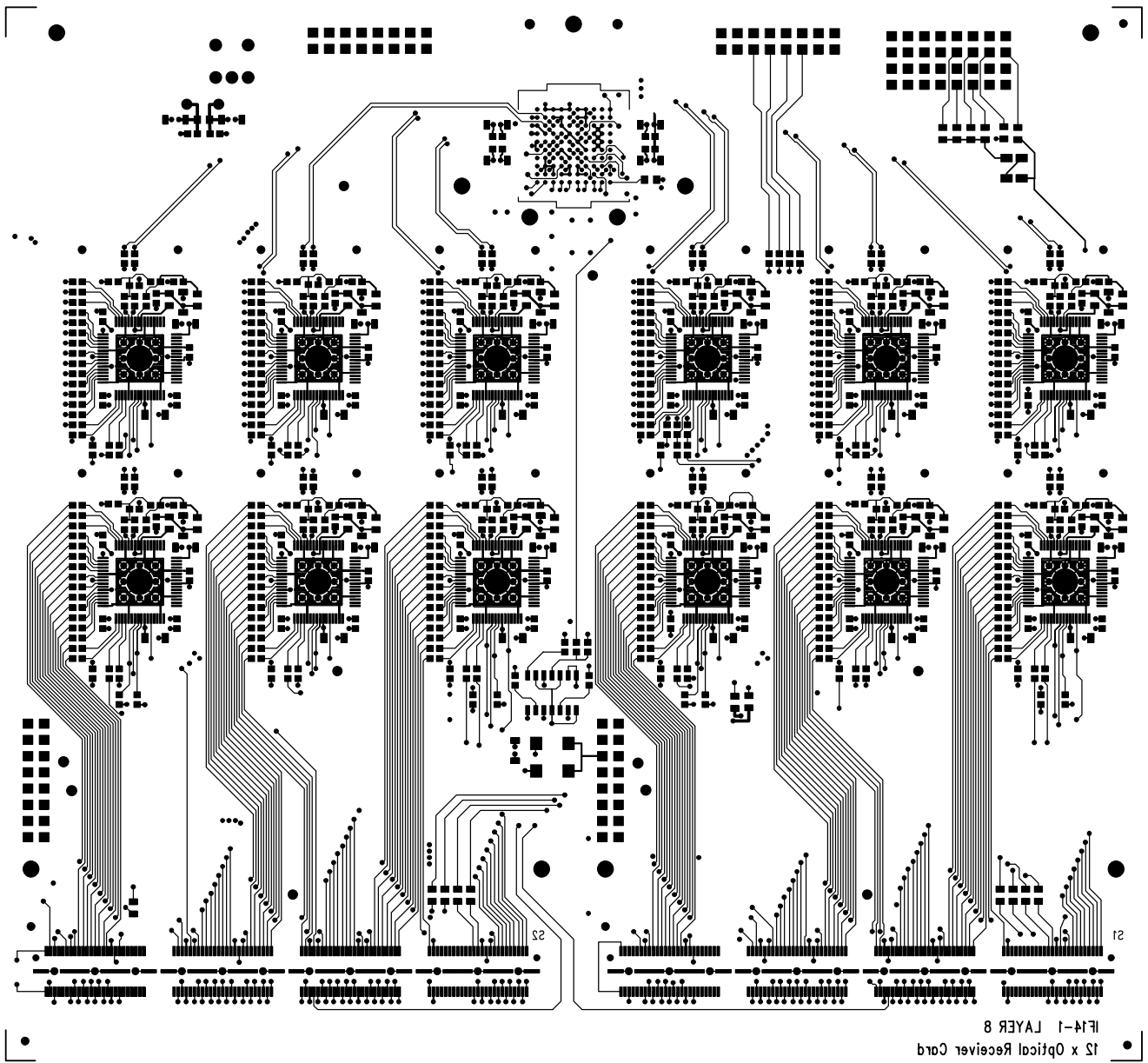


Figure 19: *Layout layer 8/8*

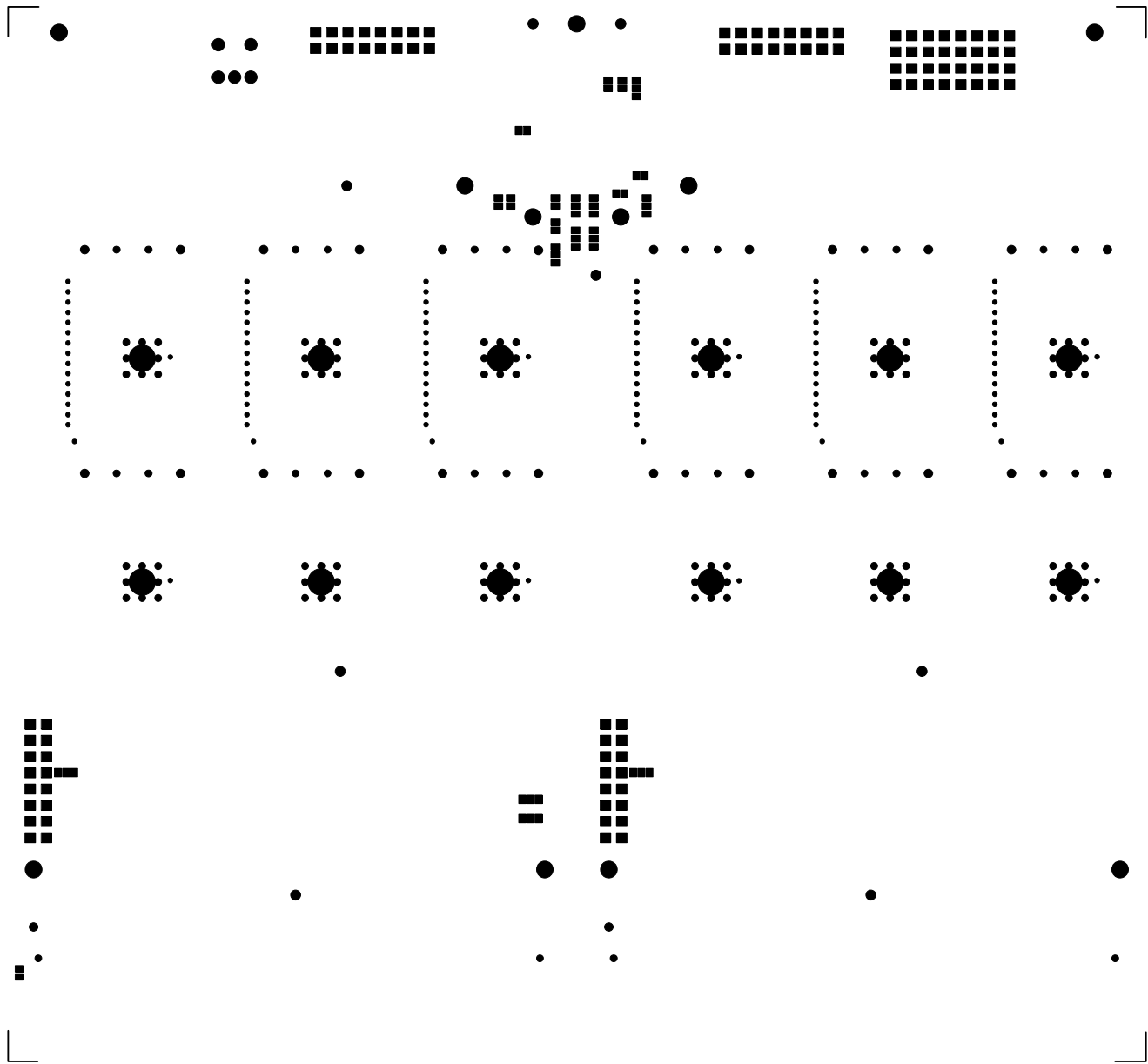


Figure 20: *Soldermask layer 1*

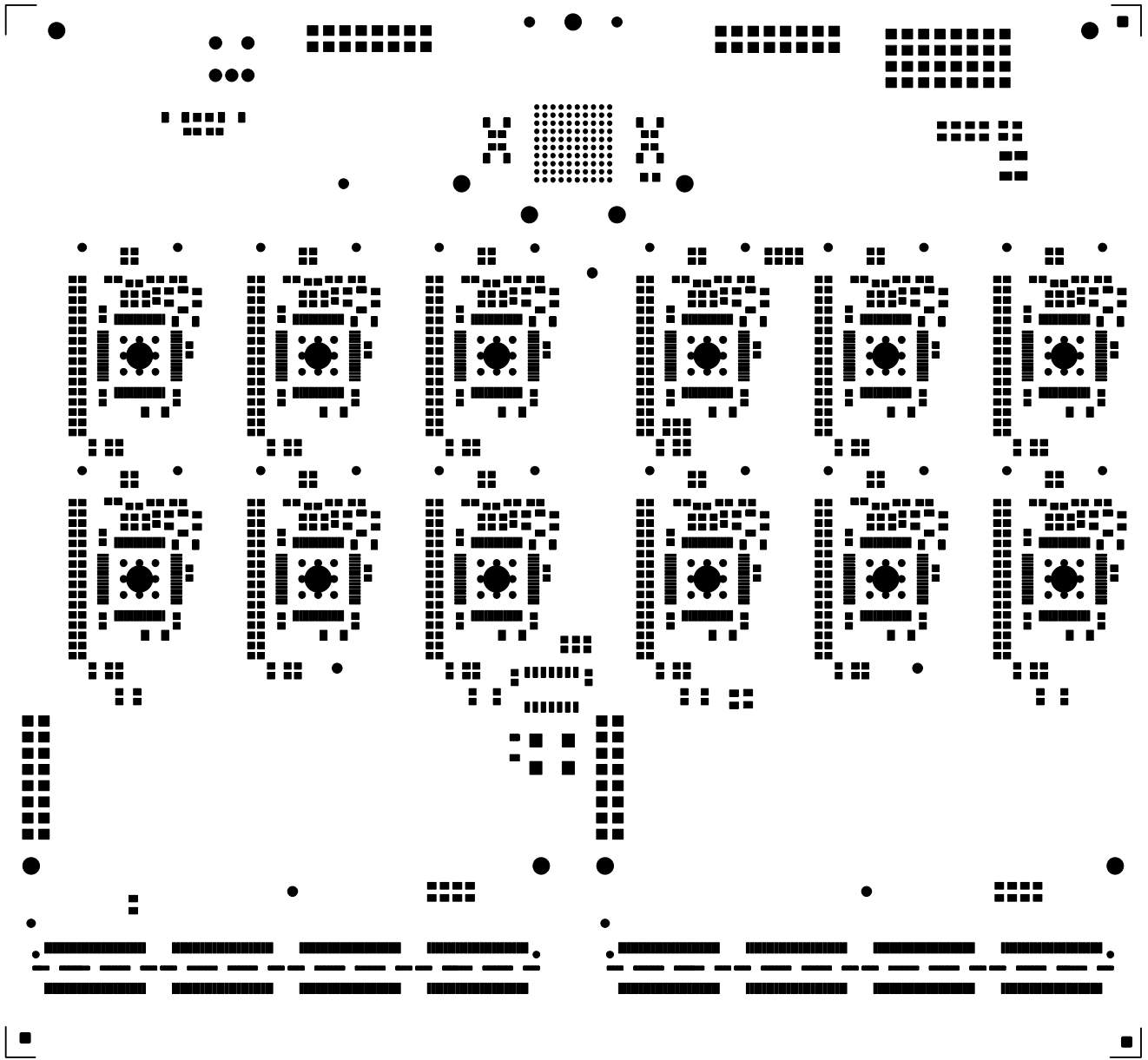


Figure 21: *Soldermask layer 8*

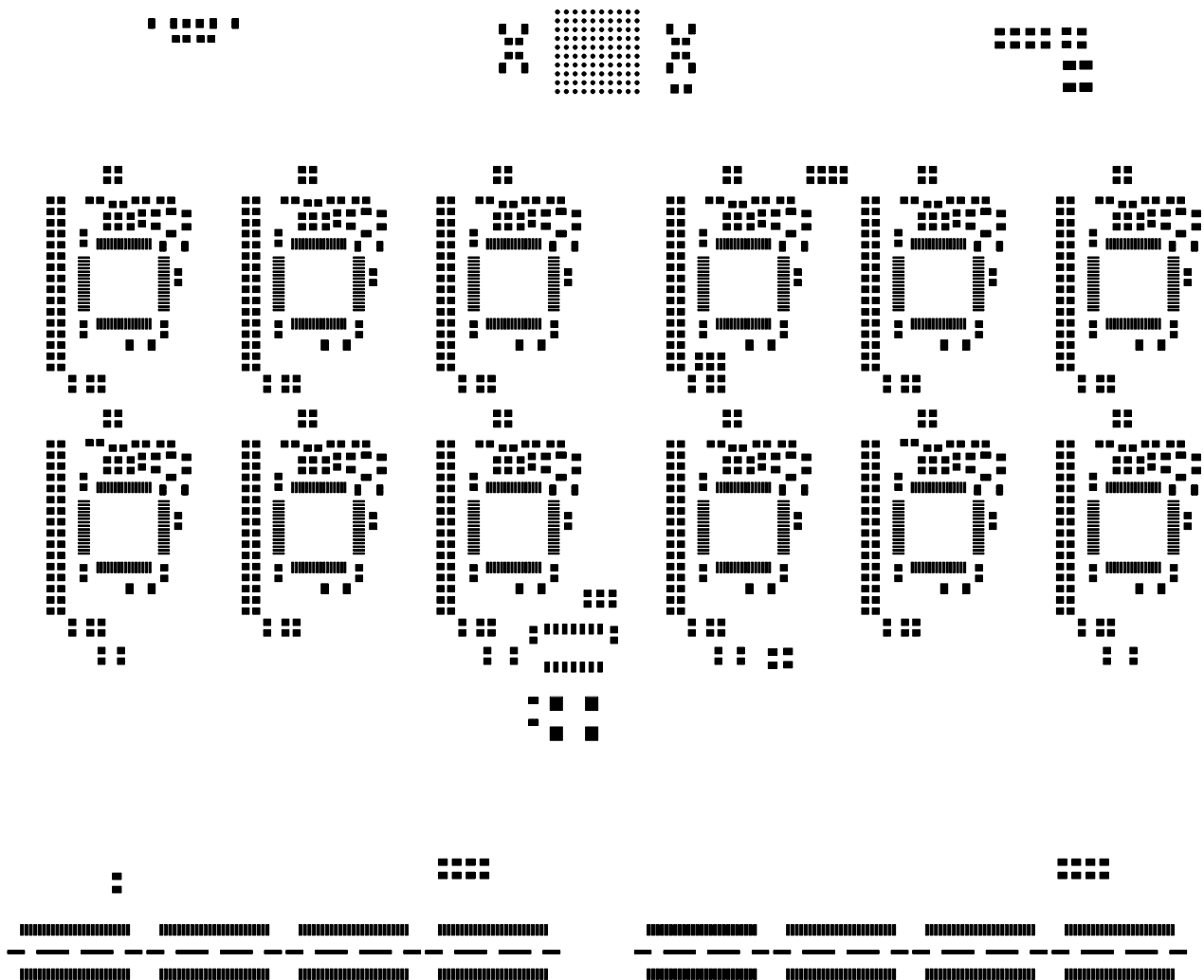


Figure 22: *SMD paste*



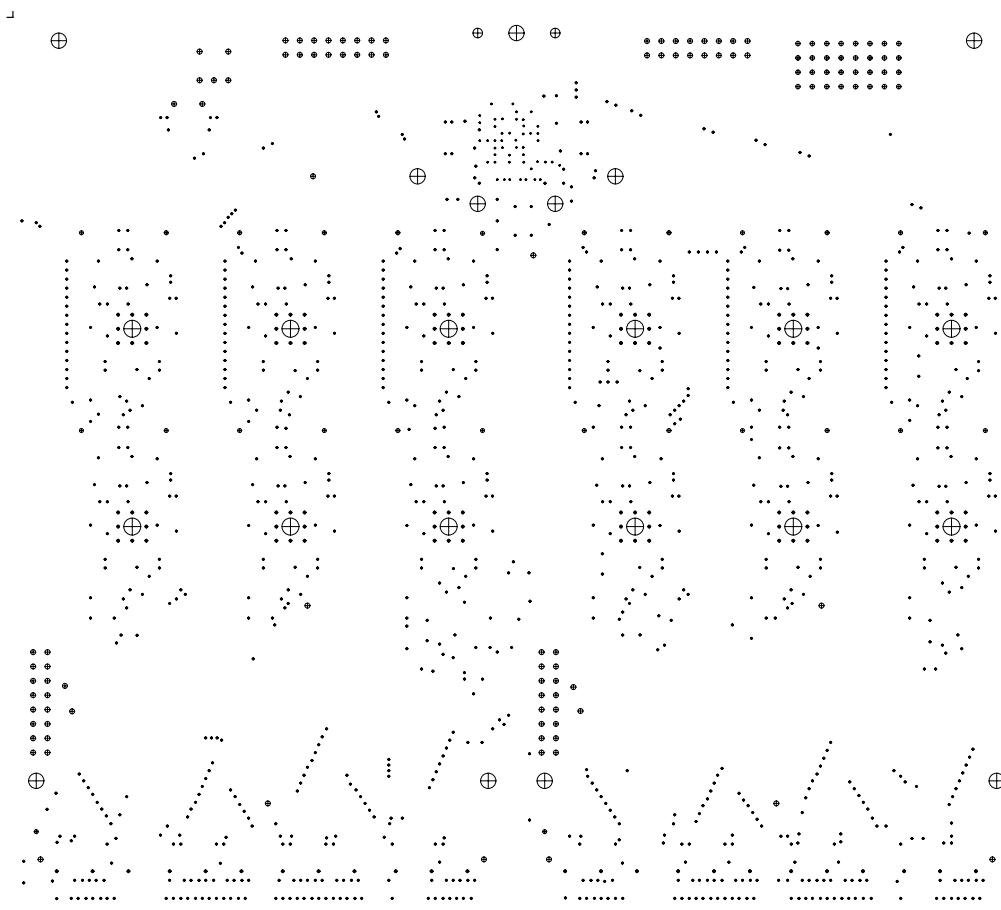


Figure 24: *Drill*



# D Component placement specification

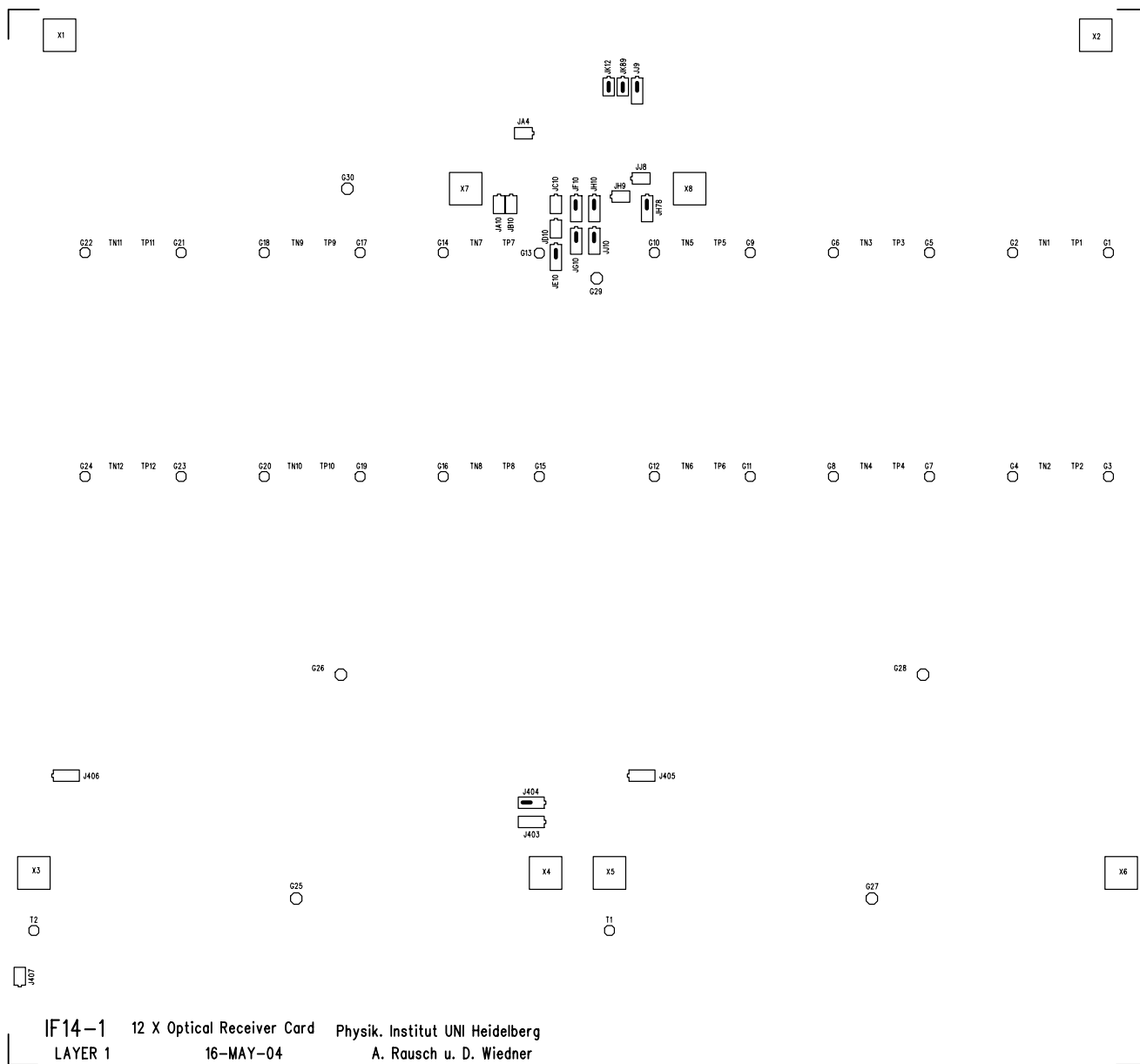


Figure 25: *Component placement specification top*

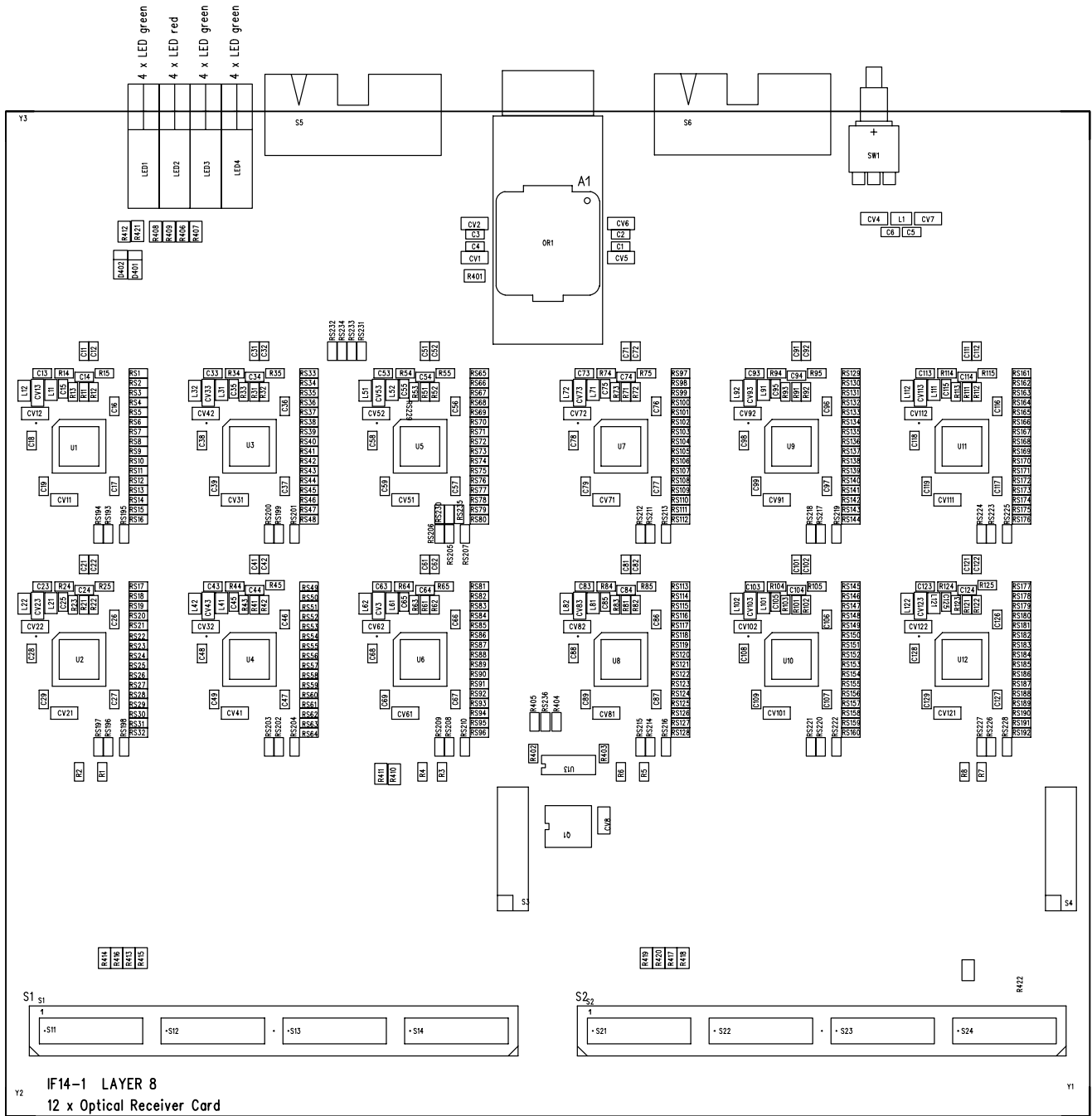


Figure 26: Component placement specification bottom

## E Bill of materials

Table 23: Bill Of Materials 1/2

Qty:	Part-Nr.:	Part-Typ:	Val.:	Int.-Nr:	Decal:	Part-Description:
1	OR1	SNAP12-REC			SNAP12-REC	12-input Optical-Receiver Emcore MRX9512
12	U1-12	TLK2501-REC			QFP10X10-64	Deserializer
1	Q1	Q-SG8002CA			Q-SG8002CA	Oscillator Bindel 80.15733 MHz
1	U13	74LCX00M			DIP14-SO	QUAD 2-INPUT POS-NAND GATE
4	LED1-4	LED-2X2			LED2X2	Signal Construct ZAZW 0422
1	D401	LL4148		4648	D-1206SMD	Diode 1N4148 in SMD 1206-package
1	D402	BAS32L		4225	D-1206SMD	Silicium SMD-Minimelf-Diode
2	S1-2	ST-200-QTS			ST-200-QTS	High Speed Connector QTS 200 pol. 0.635 mm
2	S3-4	J-2X8M			J-2X8M	2 row. Jumper 8 pins ea.
2	S5-6	ST-16-3MK			ST-16-3MK	16 pol Connector
1	SW1	SW-TASTERUM		4546	SW-TASTERUM	Reset Button
114	C1-6 C11-19 C21-29 C31-39 C41-49 C51-59 C61-69 C71-79 C81-89 C91-99 C101-109 C111-119 C121-129	CK-0603SMD	10n		CK0603SMD	SMD-Cap. l=1,6mm b=0,8mm
43	CV1-8 CV11-13 CV21-23 CV31-33 CV41-43 CV51-53 CV61-62 CV71-73 CV81-83 CV91-93 CV101-103 CV111-113 CV121-123	CK-1206SMD	4u7	4496, 4500, 4798..99,	CK1206SMD, CK1206SMD-A	SMD-Cap. l=3,2mm b=1,6mm

Table 24: Bill Of Materials 2/2

Qty:	Part-Nr.:	Part-Typ:	Val.:	Int.-Nr:	Decal:	Part-Description:
25	L1 L11-12 L21-22 L31-32 L41-42 L51-52 L61-62 L71-72 L81-82 L91-92 L101-102 L111-112 L121-122	IND-0805SMD	1uH		CK0805SMD	SMD-Bead l=4,4mm; b=2,7mm Taiyo Yuden LQ LB 2016T1R0M
8	R1-8	R-0603RAU	1k		CK0603SMD	SMD-Resistor
256	R11-12 R21-22 R31-32 R41-42 R51-52 R61-62 R71-72 R81-82 R91-92 R101-102 R111-112 R121-122 RS1-228 R402-R405	R-0603RAU	51		CK0603SMD	SMD-Resistor
24	R13-14 R23-24 R33-34 R43-44 R53-54 R63-64 R73-74 R83-84 R93-94 R103-104 R113-114 R123-124	R-0603RAU	200		CK0603SMD	SMD-Resistor
12	R15 R25 R35 R45 R55 R65 R55 R65 R75 R85 R95 R105 R115 R125	R-0603RAU	825		CK0603SMD	SMD-Resistor
8	RS229-236	R-0603RAU	510		CK0603SMD	SMD-Resistor
1	R401	R-0805RAU	10	4487	CK0805SMD	SMD-Resistor
16	R406-421	R-0805RAU	100	4487	CK0805SMD	SMD-Resistor
1	R422	R-0805RAU	5k1	4487	CK0805SMD	SMD-Resistor

## F Prices

Table 25 lists the prices of the major components for the O-RxCARD. The prices are based on offers for the amount in brackets, the price for prototype quantities (5 pc.) is around 850 USD for the O-RxCARD with all components.

Table 25: Prices for the components of the o-RxCARD

Component	Vendor	Product Name	Cost [min. order]	Quantity
Optical Receiver		Emcore MRX9512	400 USD [40]	1
Deserializer	Spoerle	Texas Instruments TLK2501	14.94 Euro [360]	12
Quartz	Bindel	C434BM8015733-4FHK00	6.80 CHF [100]	1
High Speed Connectors	Elcon	Samtec QTS-100-03-L-D-A	15.86 Euro [60]	2
Power Connector	Farnell	M20 Socket 2x8 512-280	1.07 Euro [40]	2
Clock Amplifier	Farnell	74LCX00M 111-867	0.511 Euro [50]	1
LED	Signal Construct	ZAZW 0422	1.92 Euro [100]	4
Rs, Cs, Ls	different		0.05 Euro [2000]	600
Board	QPRINT	8 layer board	58.55 Euro [30]	1
Mounting	QPRINT	SMD and BGA, one side	44.25 Euro [30]	1
initial costs	QPRINT	machine setup and prototyping	1804.65 Euro	1/30
Sum			750 Euro [30]	1

## G Adapter Board

In order to easily access all signals that run from the O-RxCARD to the TELL1 motherboard or vice versa, an adapter board has been designed. It has one high speed Samtec QSS-100-01-L-D-A connector to receive all 80 MHz digital data from 6 TLK 2501 deserializers, plus control signals. The signals are fanned out to 40-pin connectors with 1/10 inch pitch, one for each TLK deserializer (table 27-27) and one for LEDs, front panel connector signals, reset and SD. The TLK control signals Enable, LoopEnable, PrbsEn and LckRef are joined for three TLKs and controlled by jumpers on the adapter board. The adapter board has a LV power connector and input pads for 2.5 V, 2.5 V analog and 3.3 V. It is possible to connect the analog 2.5 V to the 2.5 V digital. The adapter board is a cheap 2 layer board, using only passive components, see table 26. Figure 27 shows the schematics of the adapter board, figure 28 and 29 show the placement specifications of the adapter board, figures 30 to 32 show the layout. For the usage of differential signaling a special LVDS driver board (AS27) was developed, each converting one of the data buses to LVDS.

Table 26: Bill Of Materials AS24-0

Qty:	Part-Nr.:	Part-Typ:	Val.:	Int.-Nr:	Decal:	Part-Description:
1	S1	BU-200-QSS			BU-200-QSS	High Speed Connector QSS 200 pol. 0.635 mm
4	C5-8	CK-0805SMD	100n		CK0805SMD, CK0805SMD-A	SMD-Cap. l=2mm b=1.3mm
4	C1-4	CK-1206SMD	10u		CK1206SMD, CK1206SMD-A	SMD-Cap. l=3,2mm b=1,6mm
1	L1	IND-0805SMD	1uH		CK0805SMD	SMD-Bead l=4,4mm; b=2,7mm Taiyo Yuden LQ LB 2016T1R0M
1	S3-4	J-2X8M			J-2X8M	2 row. Jumper 8 pins ea.
3	R1-3	R-0805RAU	1k		CK0805SMD	SMD-Resistor
7	J1-7	ST-40-3MK			ST-40-3MK	40 pin strip

Table 27: Connectivity adapter board 1/4, Connector J1 for Data 0 and connector J2 for Data 1

connector	pin	connectivity O-RxCARD	description	connector	pin	connectivity O-RxCARD	description
J1 (Data 0)	1	S1-1	Data0(15)	J2 (Data 1)	1	S1-49	Data1(15)
	2	GND	GND		2	GND	GND
	3	S1-2	Data0(14)		3	S1-50	Data1(14)
	4	GND	GND		4	GND	GND
	5	S1-3	Data0(13)		5	S1-51	Data1(13)
	6	GND	GND		6	GND	GND
	7	S1-4	Data0(12)		7	S1-52	Data1(12)
	8	GND	GND		8	GND	GND
	9	S1-5	Data0(11)		9	S1-53	Data1(11)
	10	GND	GND		10	GND	GND
	11	S1-6	Data0(10)		11	S1-54	Data1(10)
	12	GND	GND		12	GND	GND
	13	S1-7	Data0(9)		13	S1-55	Data1(9)
	14	GND	GND		14	GND	GND
	15	S1-8	Data0(8)		15	S1-56	Data1(8)
	16	GND	GND		16	GND	GND
	17	S1-9	Data0(7)		17	S1-57	Data1(7)
	18	GND	GND		18	GND	GND
	19	S1-10	Data0(6)		19	S1-58	Data1(6)
	20	GND	GND		20	GND	GND
	21	S1-11	Data0(5)		21	S1-59	Data1(5)
	22	GND	GND		22	GND	GND
	23	S1-12	Data0(4)		23	S1-60	Data1(4)
	24	GND	GND		24	GND	GND
	25	S1-13	Data0(3)		25	S1-61	Data1(3)
	26	GND	GND		26	GND	GND
	27	S1-14	Data0(2)		27	S1-62	Data1(2)
	28	GND	GND		28	GND	GND
	29	S1-15	Data0(1)		29	S1-63	Data1(1)
	30	GND	GND		30	GND	GND
	31	S1-16	Data0(0)		31	S1-64	Data1(0)
	32	GND	GND		32	GND	GND
	33	S1-17	RXER0		33	S1-65	RXER1
	34	GND	GND		34	GND	GND
	35	S1-18	RXDV0		35	S1-66	RXDV1
	36	GND	GND		36	GND	GND
	37	S1-21	RXCLK0		37	S1-69	RXCLK1
	38	GND	GND		38	GND	GND
	39	N.C.	N.C.		39	N.C.	N.C.
	40	GND	GND		40	GND	GND

Table 28: Connectivity adapter board 2/4, Connector J3 for Data 2 and connector J4 for Data 3

connector	pin	connectivity O-RxCard	description	connector	pin	connectivity O-RxCard	description
J3 (Data 0)	1	S1-73	Data2(15)	J4 (Data 1)	1	S1-97	Data3(15)
	2	GND	GND		2	GND	GND
	3	S1-74	Data2(14)		3	S1-98	Data3(14)
	4	GND	GND		4	GND	GND
	5	S1-75	Data2(13)		5	S1-99	Data3(13)
	6	GND	GND		6	GND	GND
	7	S1-76	Data2(12)		7	S1-100	Data3(12)
	8	GND	GND		8	GND	GND
	9	S1-77	Data2(11)		9	S1-101	Data3(11)
	10	GND	GND		10	GND	GND
	11	S1-78	Data2(10)		11	S1-102	Data3(10)
	12	GND	GND		12	GND	GND
	13	S1-79	Data2(9)		13	S1-103	Data3(9)
	14	GND	GND		14	GND	GND
	15	S1-80	Data2(8)		15	S1-104	Data3(8)
	16	GND	GND		16	GND	GND
	17	S1-81	Data2(7)		17	S1-105	Data3(7)
	18	GND	GND		18	GND	GND
	19	S1-82	Data2(6)		19	S1-106	Data3(6)
	20	GND	GND		20	GND	GND
	21	S1-83	Data2(5)		21	S1-107	Data3(5)
	22	GND	GND		22	GND	GND
	23	S1-84	Data2(4)		23	S1-108	Data3(4)
	24	GND	GND		24	GND	GND
	25	S1-85	Data2(3)		25	S1-109	Data3(3)
	26	GND	GND		26	GND	GND
	27	S1-86	Data2(2)		27	S1-110	Data3(2)
	28	GND	GND		28	GND	GND
	29	S1-87	Data2(1)		29	S1-111	Data3(1)
	30	GND	GND		30	GND	GND
	31	S1-88	Data2(0)		31	S1-112	Data3(0)
	32	GND	GND		32	GND	GND
	33	S1-89	RXER2		33	S1-113	RXER3
	34	GND	GND		34	GND	GND
	35	S1-90	RXDV2		35	S1-114	RXDV3
	36	GND	GND		36	GND	GND
	37	S1-93	RXCLK2		37	S1-117	RXCLK3
	38	GND	GND		38	GND	GND
	39	N.C.	N.C.		39	N.C.	N.C.
	40	GND	GND		40	GND	GND



Table 29: Connectivity adapter board 3/4, Connector J5 for Data 4 and connector J6 for Data 5

connector	pin	connectivity O-RxCard	description	connector	pin	connectivity O-RxCard	description
J5 (Data 4)	1	S1-121	Data4(15)	J6 (Data 5)	1	S1-169	Data5(15)
	2	GND	GND		2	GND	GND
	3	S1-122	Data4(14)		3	S1-170	Data5(14)
	4	GND	GND		4	GND	GND
	5	S1-123	Data4(13)		5	S1-171	Data5(13)
	6	GND	GND		6	GND	GND
	7	S1-124	Data4(12)		7	S1-172	Data5(12)
	8	GND	GND		8	GND	GND
	9	S1-125	Data4(11)		9	S1-173	Data5(11)
	10	GND	GND		10	GND	GND
	11	S1-126	Data4(10)		11	S1-174	Data5(10)
	12	GND	GND		12	GND	GND
	13	S1-127	Data4(9)		13	S1-175	Data5(9)
	14	GND	GND		14	GND	GND
	15	S1-128	Data4(8)		15	S1-176	Data5(8)
	16	GND	GND		16	GND	GND
	17	S1-129	Data4(7)		17	S1-177	Data5(7)
	18	GND	GND		18	GND	GND
	19	S1-130	Data4(6)		19	S1-178	Data5(6)
	20	GND	GND		20	GND	GND
	21	S1-131	Data4(5)		21	S1-179	Data5(5)
	22	GND	GND		22	GND	GND
	23	S1-132	Data4(4)		23	S1-180	Data5(4)
	24	GND	GND		24	GND	GND
	25	S1-133	Data4(3)		25	S1-181	Data5(3)
	26	GND	GND		26	GND	GND
	27	S1-134	Data4(2)		27	S1-182	Data5(2)
	28	GND	GND		28	GND	GND
	29	S1-135	Data4(1)		29	S1-183	Data5(1)
	30	GND	GND		30	GND	GND
	31	S1-136	Data4(0)		31	S1-184	Data5(0)
	32	GND	GND		32	GND	GND
	33	S1-137	RXER4		33	S1-185	RXER5
	34	GND	GND		34	GND	GND
	35	S1-138	RXDV4		35	S1-186	RXDV5
	36	GND	GND		36	GND	GND
	37	S1-141	RXCLK4		37	S1-189	RXCLK5
	38	GND	GND		38	GND	GND
	39	N.C.	N.C.		39	N.C.	N.C.
	40	GND	GND		40	GND	GND

Table 30: Connectivity adapter board 4/4, Connector J7 for LEDs, feed through signals (con), Reset, SD, jumpers T1-T8 for TLK2501 enable etc. and Pad1-6 for auxiliary signals

connector	pin	connectivity O-RxCARD	description	connector	pin	connectivity O-RxCARD	description
J2 (AUX)	1	S1-25	LED3-2	T1	1	+2.5 V	high
	2	+2.5 V	+2.5 V		2	S1-20	Enable012
	3	S1-26	LED3-4		3	GND	low
	4	+2.5 V	+2.5 V	T2	1	+2.5 V	+2.5 V
	5	S1-27	LED3-6		2	S1-68	LoopEn012
	6	+2.5 V	+2.5 V		3	GND	GND
	7	S1-28	LED3-8	T3	1	+2.5 V	+2.5 V
	8	+2.5 V	+2.5 V		2	S1-92	PrbsEn012
	9	S1-94	ExClk1		3	GND	GND
	10	GND	GND	T4	1	+2.5 V	+2.5 V
	11	S1-145	con1		2	S1-116	Enable345
	12	GND	GND		3	GND	GND
	13	S1-146	con3	T5	1	+2.5 V	+2.5 V
	14	GND	GND		2	S1-140	LoopEn345
	15	S1-147	con5		3	GND	GND
	16	GND	GND	T6	1	+2.5 V	+2.5 V
	17	S1-148	con7		2	S1-188	PrbsEn345
	18	GND	GND		3	GND	GND
	19	S1-163	TP	T7	1	+2.5 V	+2.5 V
	20	GND	GND		2	S1-19, 67, 91	LckRef012
	21	S1-164	SD		3	GND	GND
	22	GND	GND	T8	1	+2.5 V	+2.5 V
	23	N.C.	N.C.		2	S1-115, 139, 187	LckRef345
	24	GND	GND		3	GND	GND
	25	N.C.	N.C.	J7	1	+2.5 V	+2.5 V
	26	GND	GND		2	S3-9	A2P5
	27	N.C.	N.C.		3	+2.5 VA	+2.5 VA
	28	GND	GND	Pad1	1	S1-157	aux
	29	N.C.	N.C.	Pad2	1	S1-158	aux
	30	GND	GND	Pad3	1	S1-159	aux
	31	N.C.	N.C.	Pad4	1	S1-160	aux
	32	GND	GND	Pad5	1	S1-161	aux
	33	N.C.	N.C.	Pad6	1	S1-162	aux
	34	GND	GND				
	35	S1-196		<u>Reset</u>			
	36	GND		GND			
	37	S1-199		TDI			
	38	GND		GND			
	39	S1-200		TDO			
	40	GND		GND			



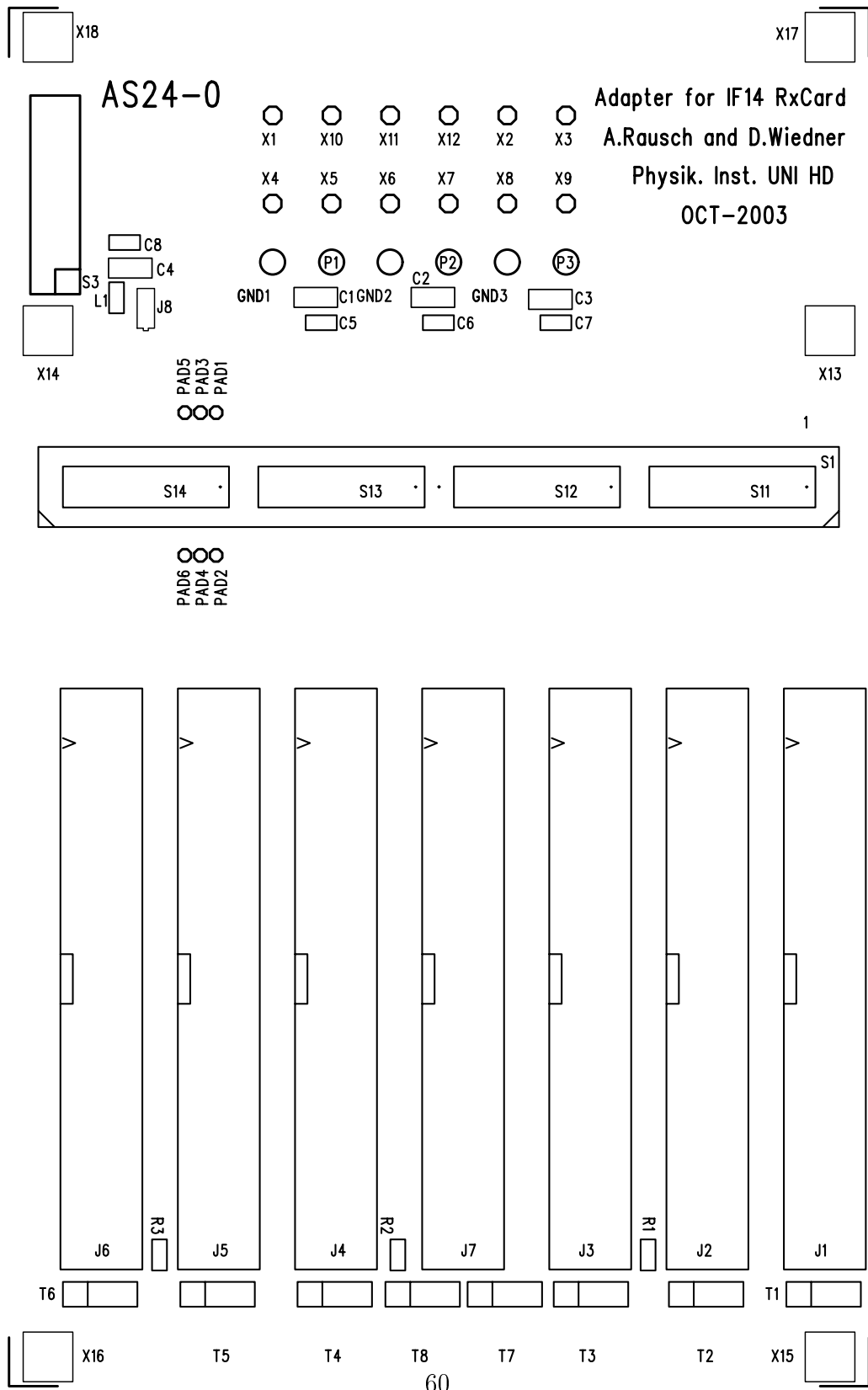


Figure 28: Adapter Board component placement specification top

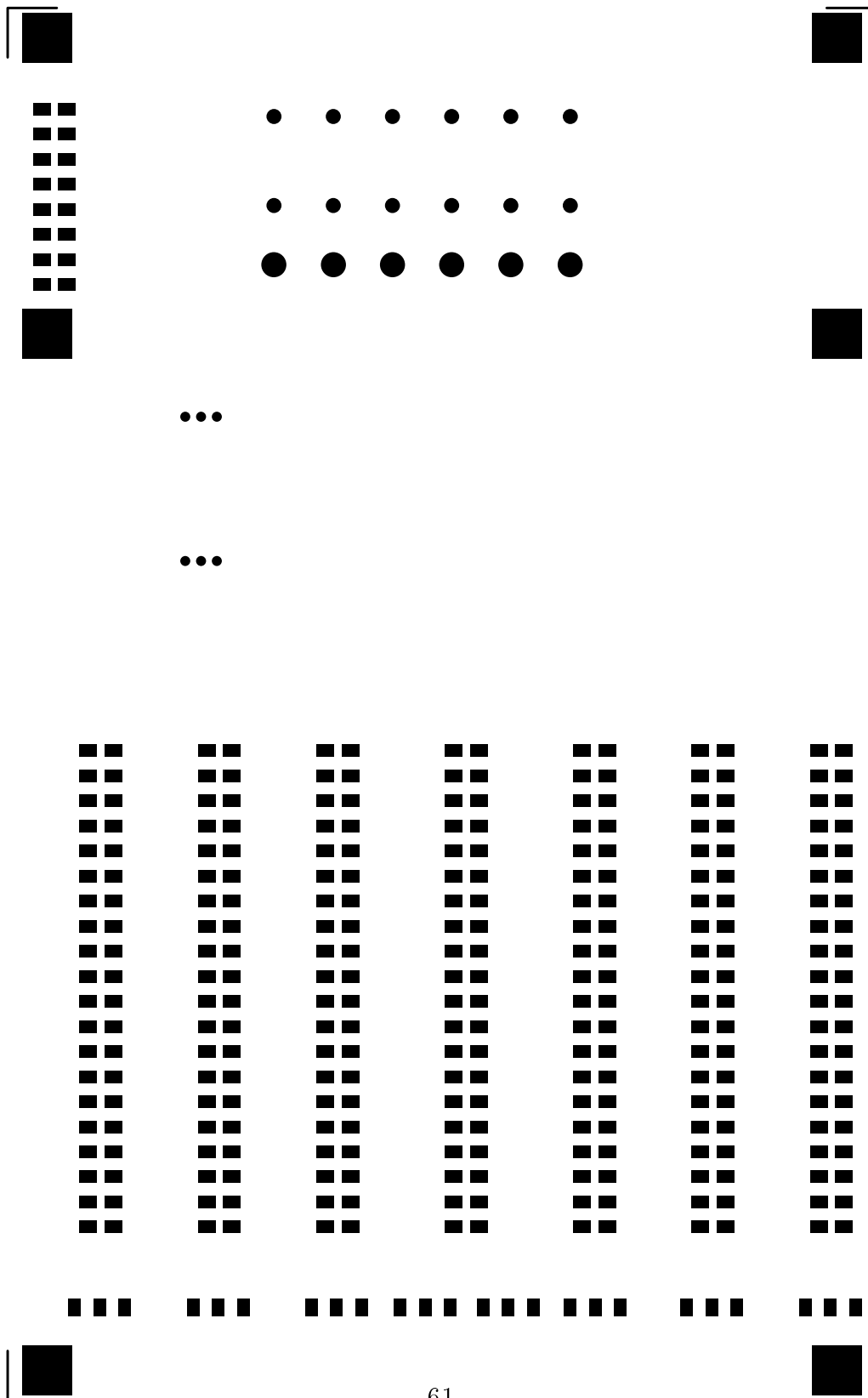


Figure 29: *Adapter Board component placement specification bottom*

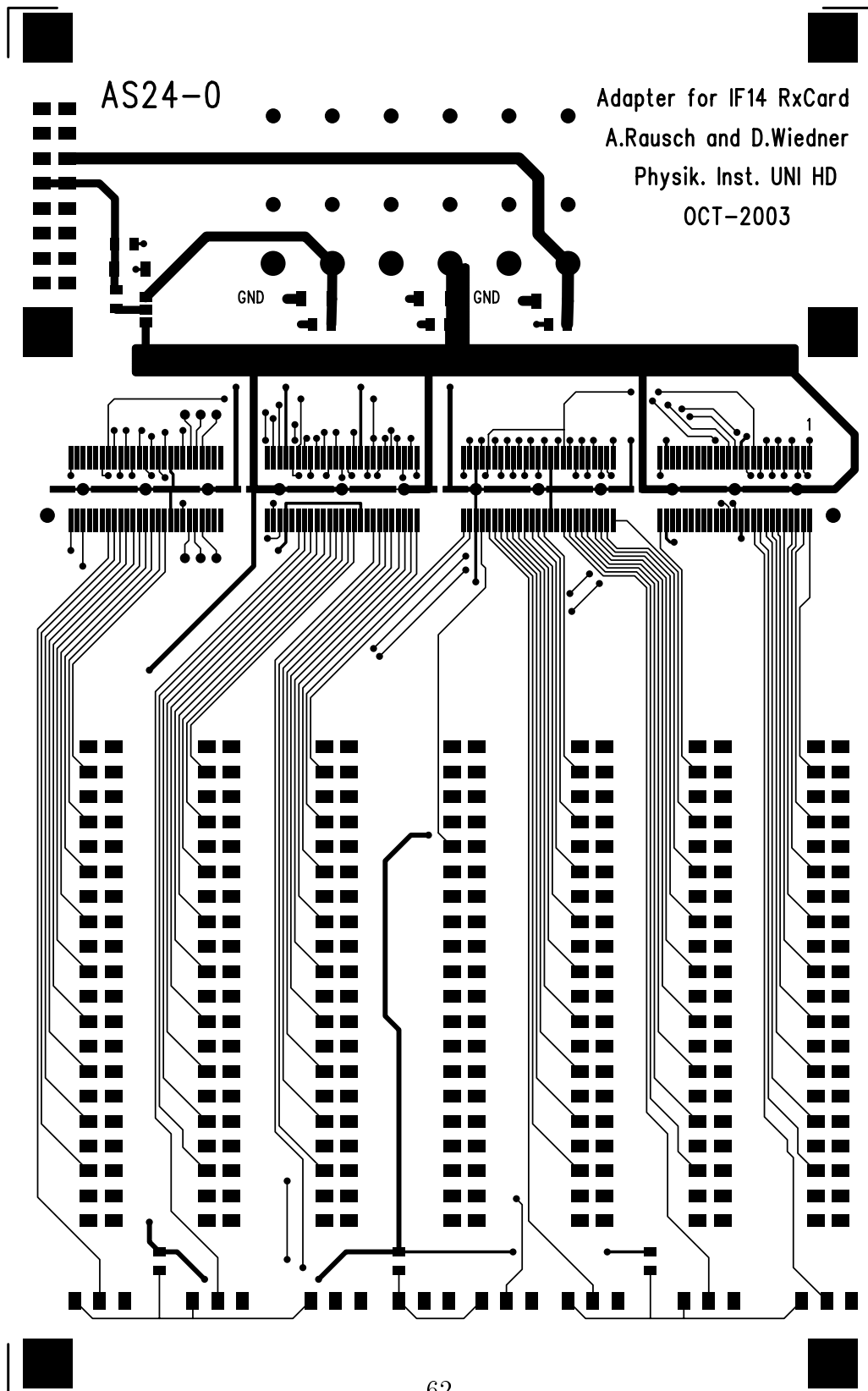


Figure 30: Adapter Board layout top

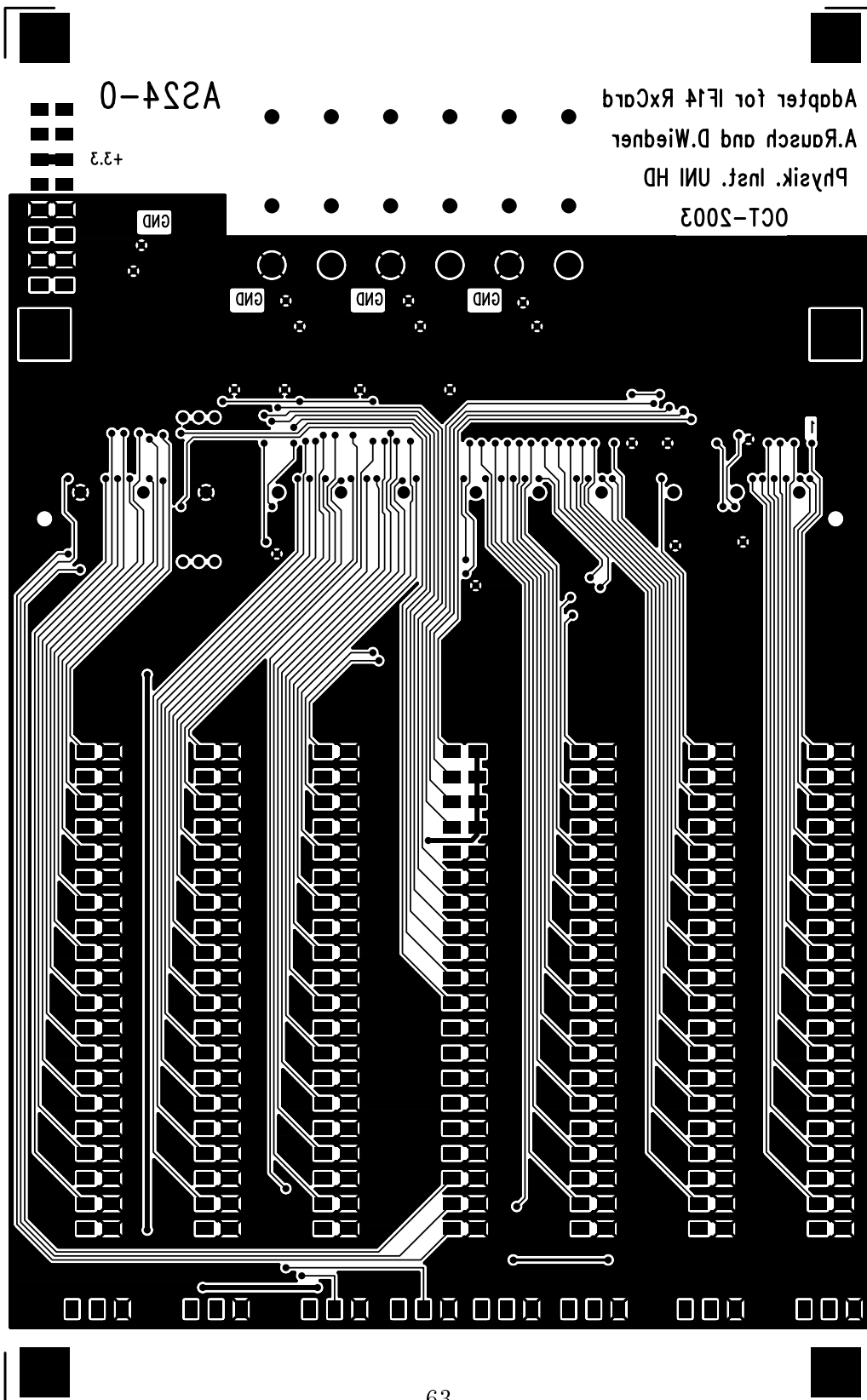


Figure 31: Adapter Board layout bottom

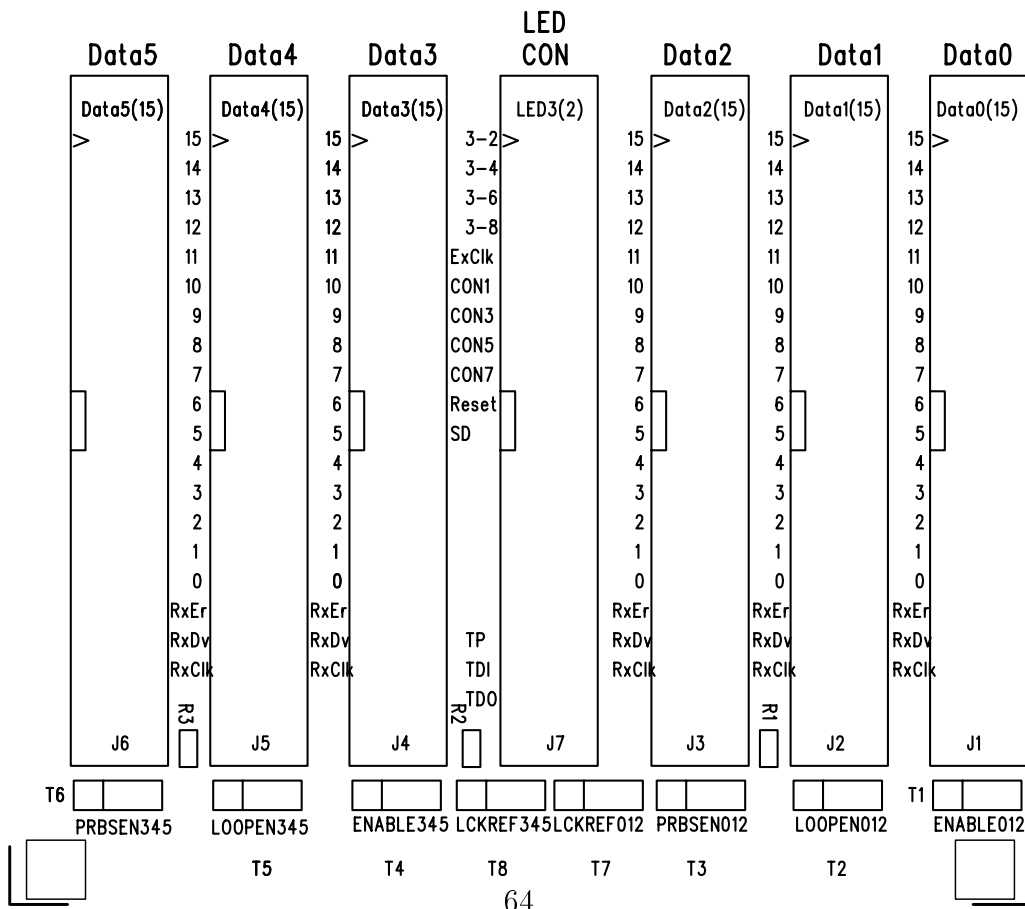
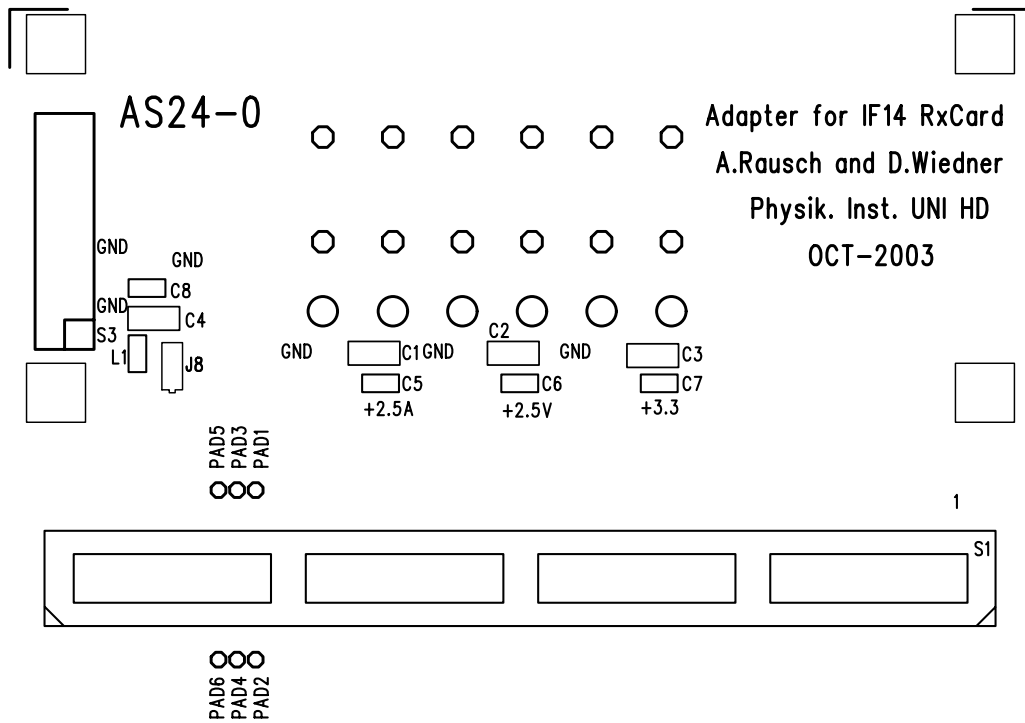


Figure 32: Adapter Board Text



## References

- [1] Guido Haefeli, Aurelio Bay, Federica Legger, Laurent Locatelli, Jorgen Christiansen, Dirk Wiedner. Specification for a common read out board for LHCb, Version 3.0, LHCb 2003-007 IPHE 2003-02 September 2, 2003
- [2] Ulrich Uwer, Dirk Wiedner. Outer Tracker Electronics: Expected data volume of the LHCb Outer Tracker
- [3] Jorgen Christiansen, '*Requirements to the L1 front-end electronics*' LHCb Technical Note LHCb 2003-078.
- [4] TLK2501 1.5 TO 2.5 GBPS TRANSCEIVER, Data sheet Copyright 2002 Texas Instruments Incorporated <http://www-s.ti.com/sc/ds/tlk2501.pdf>
- [5] MTX9512 and MRX9512 12 Channel Paralell Optical TX and RX Modules - 2.7 Gbit per Channel, Preliminary Data Sheet 9512 Draft
- [6] SNAP12 12 channel pluggable optical module MSA, Specifications, Appendix to the SNAP12 Multi-Source Agreement
- [7] IEEE Std 802.3, 1998 Edition