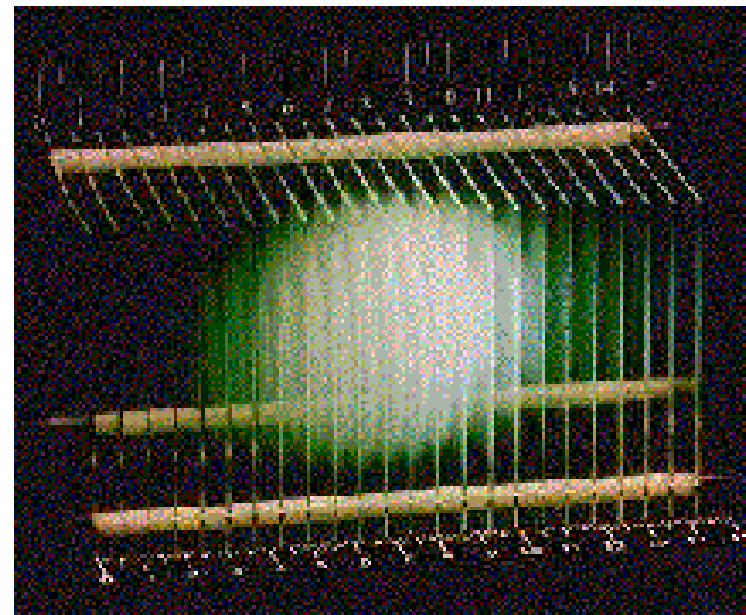
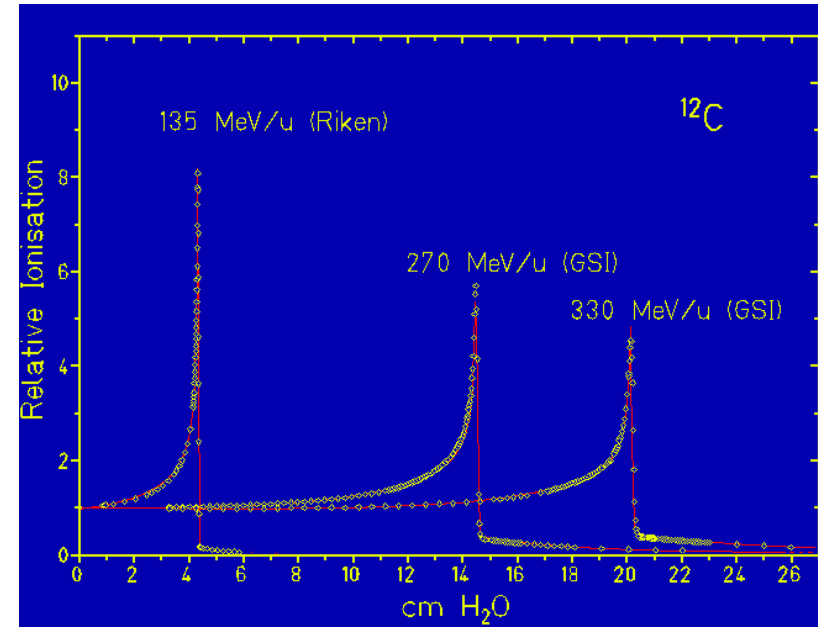
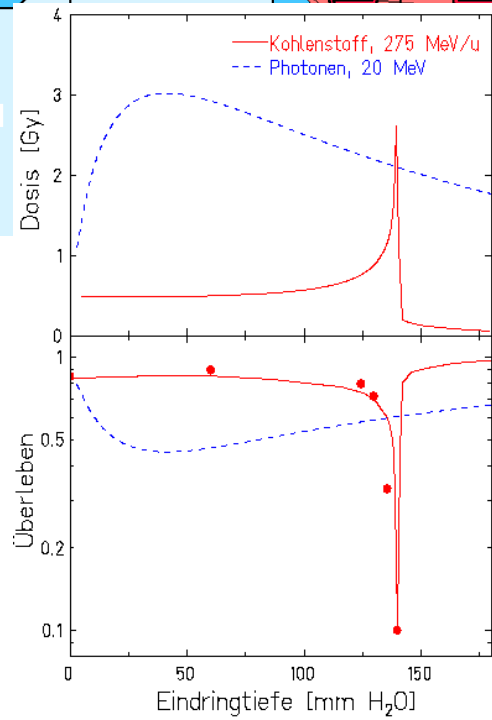
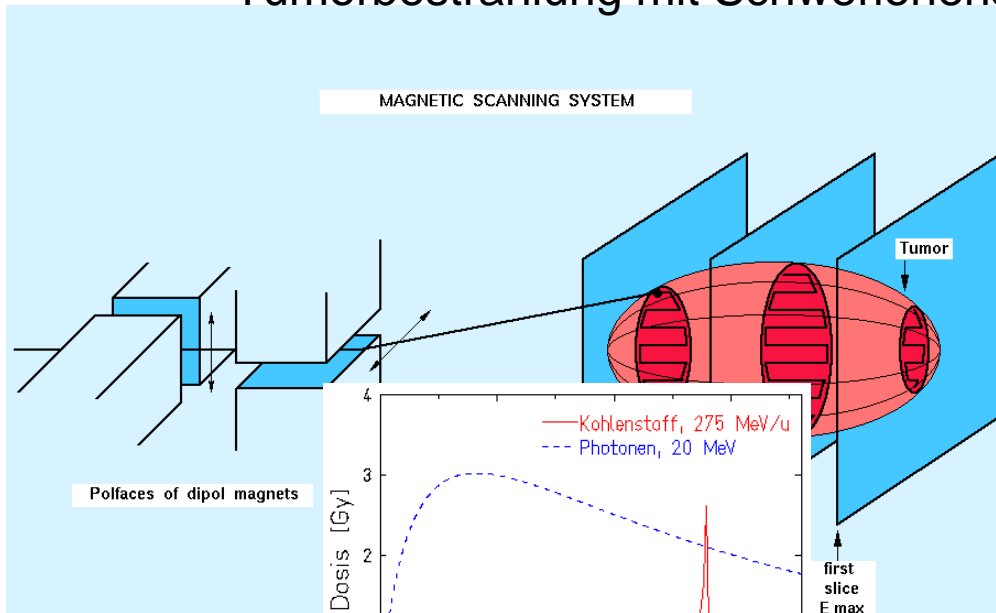
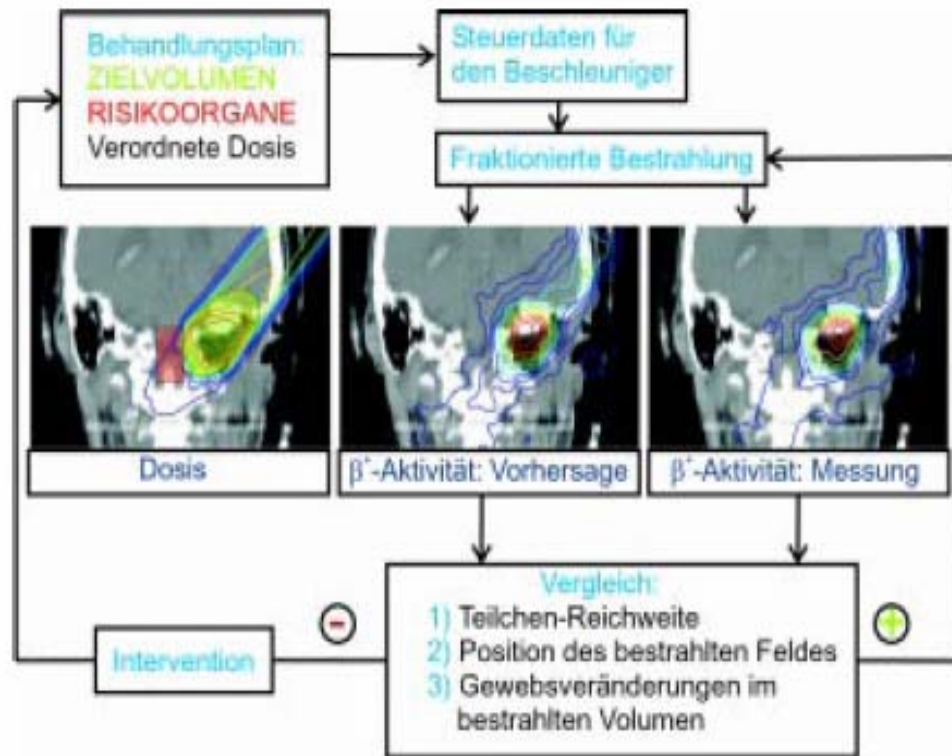
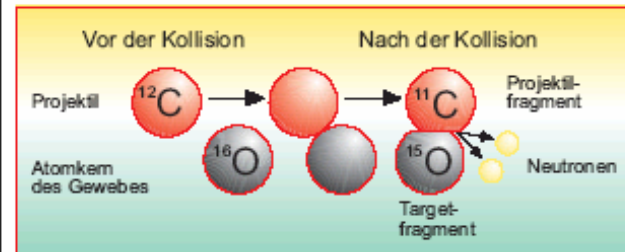


Tumorbestrahlung mit Schwerionenstrahlen (In HD im Bau → 2007)

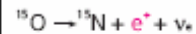
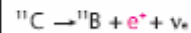




1) Nukleare Fragmentierung



2) β⁺-Zerfall:



3) Positronenannihilation



$$E(\gamma_1) = E(\gamma_2) = 511 \text{ keV}$$

$$\angle(\gamma_1, \gamma_2) = 180^\circ$$

4) PET-Messung

